

GENERAL NOTES:

- PRODUCT CERTIFICATIONS**
APPROVED FABRICATOR OF PREFABRICATED BUILDINGS. REF. IAS REPORT NO. FA-405
- MATERIALS SPECIFICATION**

ASTM DESIGNATION	YIELD STRENGTH
FLAT BAR..... A-572	FY = 50 KSI MIN
STEEL PLATE..... A-572	FY = 50 KSI MIN
HOT-ROLLED MILL SHAPES..... A-992	FY = 50 KSI MIN
CONNECTION PLATES..... A-572	FY = 50 KSI MIN
BRACE RODS..... A-36	FY = 36 KSI MIN
COLD-FORMED LIGHT GAGE SHAPES..... A-570	FY = 55 KSI
ROOF AND WALL SHEETING (R PANEL)..... A-792-94	FY = 80 KSI (GRADE E)
ROOF SHEETING (STANDING SEAM)..... A-446-76	FY = 50 KSI (GRADE D)
BOLTS TYP..... A-325	
1/2" BOLTS..... GRADE 5	
- SECONDARY STRUCTURAL COATING**
FORMED FROM GALVANIZED PRODUCTS (G60)
- BUILDER/CONTRACTOR OR A/E FIRM RESPONSIBILITIES**
PACIFIC BUILDING SYSTEMS STANDARD PRODUCT SPECIFICATIONS FOR DESIGN, FABRICATION, QUALITY CRITERIA, STANDARDS AND TOLERANCES SHALL GOVERN THE WORK, UNLESS STIPULATED OTHERWISE IN THE CONTRACT DOCUMENTS.

IN CASE OF DISCREPANCIES BETWEEN PACIFIC BUILDING SYSTEMS STRUCTURAL PLANS AND PLANS FOR OTHER TRADES, THE PACIFIC BUILDING SYSTEMS PLANS SHALL GOVERN.

IT IS THE RESPONSIBILITY OF THE BUILDER/CONTRACTOR TO OBTAIN APPROPRIATE APPROVALS AND NECESSARY PERMITS FROM CITY, COUNTY, STATE, OR FEDERAL AGENCIES, AS REQUIRED.

ACCEPTANCE OF THE PACIFIC BUILDING SYSTEMS INTERPRETATION OF THE CONTRACT.

ONCE THE BUILDER/CONTRACTOR OR A/E FIRM HAS SIGNED PACIFIC BUILDING SYSTEMS APPROVAL PACKAGE, CHANGES FROM THE CONTRACT BY THE BUILDER WILL BE BILLED TO THE BUILDER/ CONTRACTOR FOR MATERIAL, ENGINEERING, AND HANDLING FEES. SUCH CHANGES MAY CAUSE THE PROJECT TO BE MOVED FROM THE FABRICATION AND/OR SHIPPING SCHEDULE. A PENALTY FEE MAY BE CHARGED IF THE PROJECT MUST BE MOVED FROM THE FABRICATION AND/OR SHIPPING SCHEDULE, AS LONG AS PACIFIC BUILDING SYSTEMS DESIGN AND DETAILING APPROACH COMPLIES WITH THE CONTRACT.

THE BUILDER/CONTRACTOR OR A/E FIRM IS RESPONSIBLE FOR THE OVERALL PROJECT COORDINATION. ALL INTERFACE AND COMPATIBILITY CONCERNING ANY MATERIALS NOT FURNISHED BY PACIFIC BUILDING SYSTEMS ARE TO BE CONSIDERED AND COORDINATED BY THE BUILDER/CONTRACTOR OR A/E FIRM. THESE PACIFIC BUILDING SYSTEMS ASSUMPTIONS SHALL GOVERN UNLESS SPECIFIC DESIGN CRITERIA CONCERNING THIS INTERFACE BETWEEN MATERIALS IS FURNISHED AS PART OF THE CONTRACT.

THE BUILDER/CONTRACTOR IS RESPONSIBLE TO INSURE THAT ALL OTHER PROJECT PLANS AND SPECIFICATIONS COMPLY WITH THE APPLICABLE REQUIREMENTS OF ANY GOVERNING BUILDING AUTHORITIES.

SUPPLYING SEALED ENGINEERING DESIGN DATA AND DRAWINGS FOR THE PACIFIC BUILDING SYSTEMS BUILDING DOES NOT IMPLY OR CONSTITUTE AN AGREEMENT THAT PACIFIC BUILDING SYSTEMS OR ITS DESIGN ENGINEER IS ACTING AS THE ENGINEER OF RECORD OR DESIGN PROFESSIONAL FOR THE CONSTRUCTION PROJECT. THESE DRAWINGS AND DESIGN DATA ARE SEALED AS TO THE STRUCTURAL SYSTEM FURNISHED BY PACIFIC BUILDING SYSTEMS IN COMPLIANCE WITH ALL REQUIREMENTS OF THE CONTRACT.

THE BUILDER/CONTRACTOR IS RESPONSIBLE FOR SETTING OF ANCHOR BOLTS AND ERECTION OF STEEL BUILDING COMPONENTS IN ACCORDANCE WITH PACIFIC BUILDING SYSTEMS "FOR CONSTRUCTION" DRAWINGS. TEMPORARY SUPPORTS OR BRACING REQUIRED FOR THE BUILDING ERECTION WILL BE THE RESPONSIBILITY OF THE ERECTOR TO DETERMINE, FURNISH, AND INSTALL.
- A-325 BOLT TIGHTENING REQUIREMENTS**
HIGH STRENGTH A-325 BOLTS SHALL BE TIGHTENED BY THE TURN-OF-THE-NUT METHOD IN ACCORDANCE WITH THE LATEST EDITION, AISC SPECIFICATION FOR STRUCTURAL JOINTS USING ASTM A-325 OR A-490 BOLTS. WASHERS ARE NOT REQUIRED WHEN A-325 BOLTS ARE TIGHTENED BY THE TURN-OF-THE-NUT METHOD.

TABLE -NUT ROTATION FROM SNUG-TIGHT CONDITION

BOLT LENGTH (UNDERSIDE OF HEAD TO EDGE OF BOLT)	DISPOSITION OF OUTER FACE OF BOLTED PARTS		
	BOTH FACES NORMAL TO BOLT AXIS	ONE FACE NORMAL TO BOLT AXIS AND OTHER SLOPED NOT MORE THAN 1:20 (BEVELED WASHER NOT USED)	BOTH FACES SLOPED NOT MORE THAN 1:20 FROM NORMAL TO THE BOLT AXIS (BEVELED WASHER NOT USED)
UP TO AND INCLUDING 4 DIAMETERS	1/3 TURN	1/2 TURN	2/3 TURN
OVER 4 DIAMETERS BUT NOT EXCEEDING 8 DIAMETERS	1/2 TURN	2/3 TURN	5/6 TURN

FOR BOLTS INSTALLED BY 1/2 TURN AND LESS, THE TOLERANCE SHALL BE PLUS OR MINUS 30 DEGREES.
FOR BOLTS INSTALLED BY 2/3 TURN AND MORE, THE TOLERANCE SHALL BE PLUS OR MINUS 45 DEGREES.

BUILDING INFORMATION

JOB NUMBER: 23-8981
 CUSTOMER: Idaho County
 PROJECT: Dumpster Cover
 LOCATION: Elk City, ID 83525

LOADING INFORMATION

RISK CATEGORY: II - Standard Occupancy
 BLDG. CODE: IBC 18
 CLOSED/OPEN: Partially Enclosed
 EXPOSURE: C
 WIND SPEED: 104 MPH
 COLLATERAL LOAD: 5.00 PSF
 DEAD LOAD: 3.40 PSF + FRAME WT
 LIVE LOAD: 20.00 PSF
 ROOF SNOW LOAD: 126.00 PSF
 GROUND SNOW LOAD: 150.00 PSF
 SNOW IMPORTANCE (Is): 1.00

EARTHQUAKE DESIGN DATA

SEISMIC DESIGN CATEGORY: C
 SEISMIC IMPORTANCE FACTOR: 1.00
 MAPPED SPECTRAL RESPONSE ACCELERATIONS
 S_s 0.295 %g S_{MS} 0.461 %g
 S_1 0.103 %g S_{M1} 0.247 %g
 SPECTRAL RESPONSE COEFFICIENTS
 S_{DS} 0.308 %g S_{D1} 0.164 %g

NOTE: IT IS THE CUSTOMER'S RESPONSIBILITY TO VERIFY ALL THE DESIGN CRITERIA

WARNING NOTICE

VERY IMPORTANT INFORMATION

THIS MATERIAL IS SUBJECT TO SEVERE WATER DAMAGE IF MOISTURE IS ALLOWED TO GET BETWEEN THE PARTS; THEREFORE, IT MUST BE STORED UNDER COVER AND ONE END ELEVATED TO ALLOW FOR DRAINAGE UNTIL ERECTED. IF MOISTURE IS ALLOWED TO GET BETWEEN THE PARTS, "RUST" OR "PAINT LIFT OFF" MAY OCCUR. THE MANUFACTURER WILL NOT ACCEPT CLAIMS FOR WET STORAGE DAMAGE. THE CUSTOMER ASSUMES FULL RESPONSIBILITY FOR THE CONDITION OF THIS MATERIAL AFTER DELIVERY BY THE TRUCKING COMPANY.

MAIN BUILDING

DESCRIPTION: 20 x 60 x 12.1 x 20
 SLOPE: 4.75:12
 STEEL COLOR: RED
 BASE COND: Standard Base Angle

SHEETING TYPE AND COLOR

ROOF: PBR, Gauge: 26, Color: Black
 WALL: PBR, Gauge: 26, Color: Jackson Copper
 WAINSCOT: PBR, Gauge: 26, Color: Benton Beige
 EAVE SOFFIT: None
 GABLE SOFFIT: None
 SW LINER: None
 EW LINER: None
 GABLE TRIM: Black
 EAVE TRIM: Black
 GUTTER TRIM: None
 CORNER TRIM: Black
 JAMB TRIM: None
 DOWNSPOUT: None
 BASE TRIM: Black

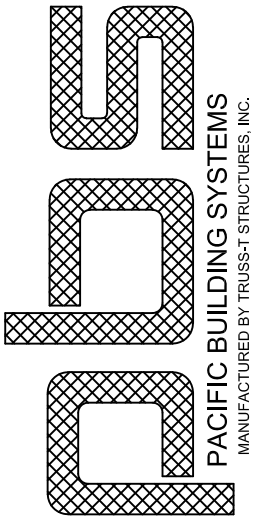
INSULATION

ROOF: None
 WALLS: None

ACCESSORIES * See Contract for Specifics

None

DATE	4/08/24
ISSUED FOR	GGD
REVISION	0



PACIFIC BUILDING SYSTEMS
 MANUFACTURED BY TRUSS-T STRUCTURES, INC.

2100 N. PACIFIC HWY. WOODBURN, OREGON 97071 PHONE 503 / 981-9681

PROJ: **Dumpster Cover**
 Elk City, ID 83525
 TITLE: **Drawing Cover Sheet**
 DEALER: **Idaho County**

THIS DRAWING INCLUDING DESIGN PRINCIPLES IS THE PROPERTY OF TRUSS-T STRUCTURES, INC. AND SHALL NOT BE REPRODUCED, COPIED OR LOANED IN PART OR IN WHOLE WITHOUT WRITTEN PERMISSION. IT IS NOT TO BE USED IN ANY MANNER THAT MAY CONSTITUTE A VIOLATION OF THE AGREEMENT DIRECTLY OR INDIRECTLY TO TRUSS-T STRUCTURES, INC.

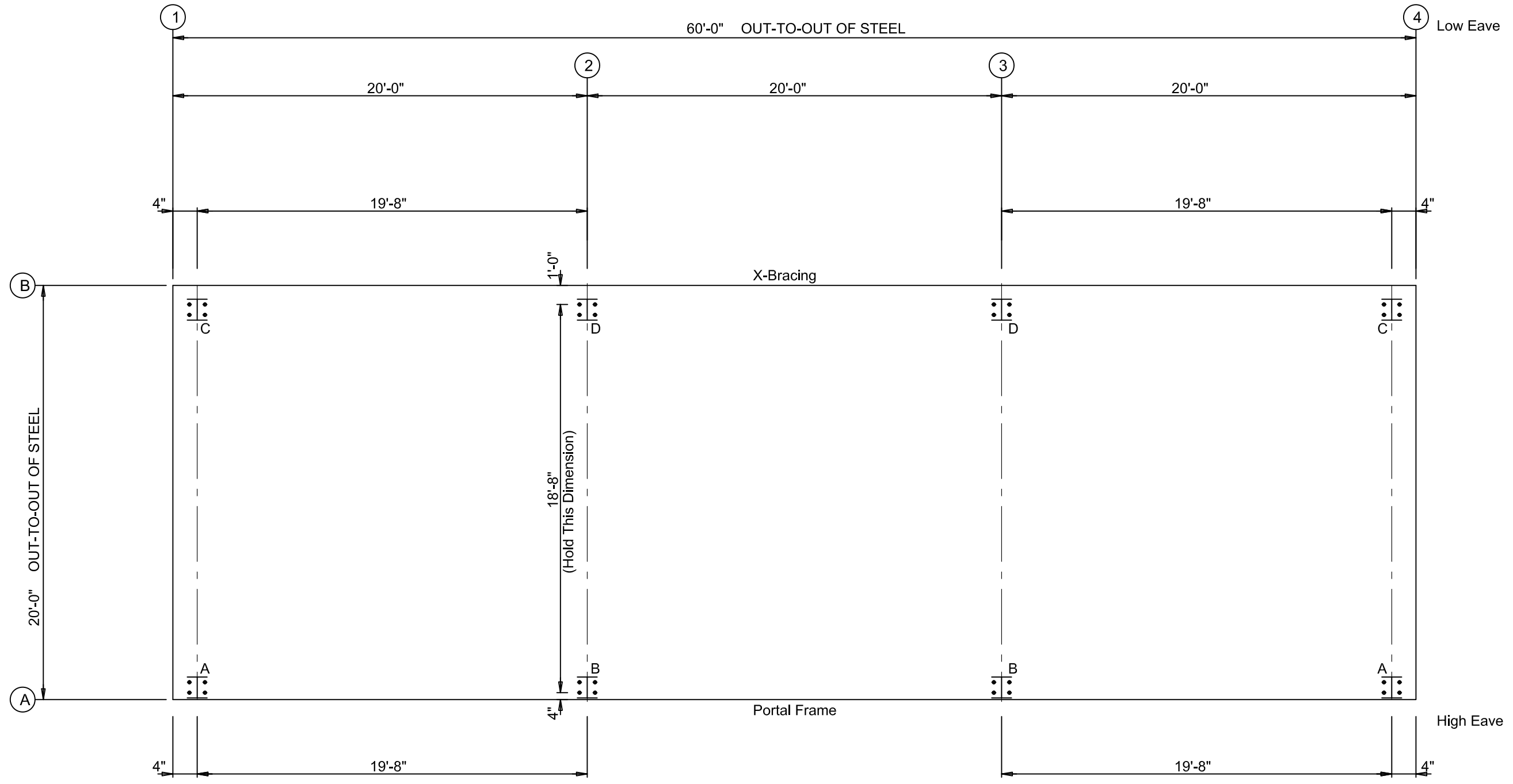
DATE: **3/07/24**

DWG BY: **KLS**

CHECKED BY: **JP**

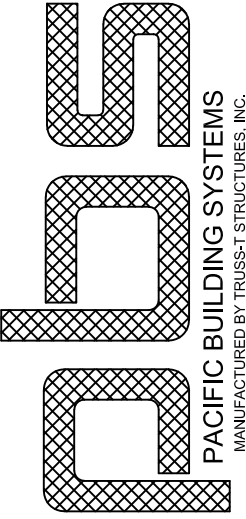
PAGE: **CS1 OF 1**

JOB ID: **23-8981**



Anchor Bolt Plan
 NOTE: All Base Plates @ 100'-0" (U.N.)


REVISION	DATE
0	4/08/24 GGD

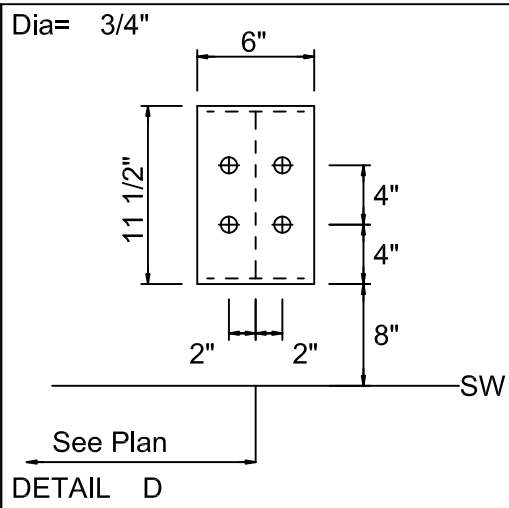
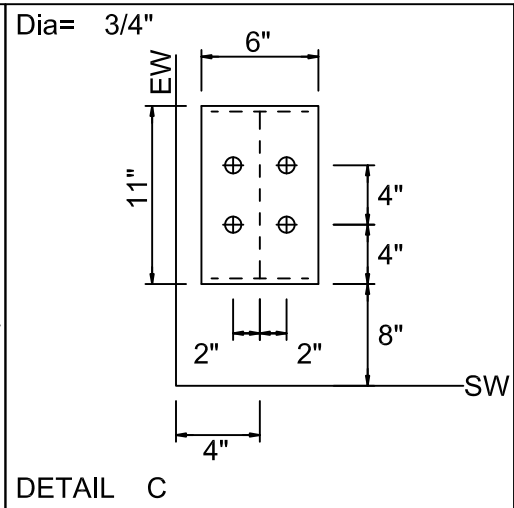
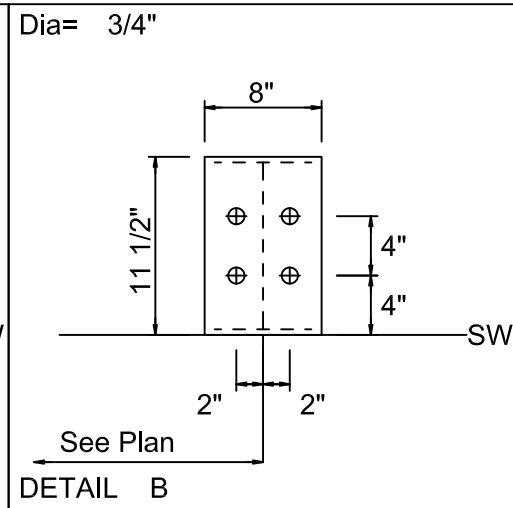
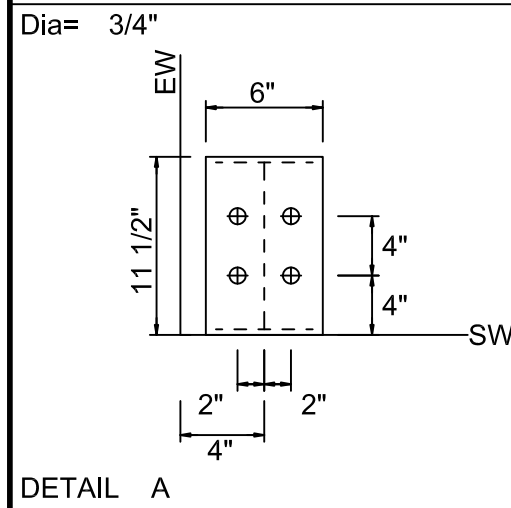


Truss-T
 PACIFIC BUILDING SYSTEMS
 MANUFACTURED BY TRUSS-T STRUCTURES, INC.
 2100 N. PACIFIC HWY. WOODBURN, OREGON 97071 PHONE 503 / 981-9581

PROJ: Dumpster Cover
 Elk City, ID 83525
 TITLE: Anchor Bolt Plan
 DEALER: Idaho County

THIS DRAWING INCLUDING DESIGN PRINCIPLES IS THE PROPERTY OF TRUSS-T STRUCTURES, INC. AND SHALL NOT BE REPRODUCED, COPIED OR LOANED IN PART OR IN WHOLE WITHOUT WRITTEN PERMISSION. IT IS NOT TO BE USED IN ANY MANNER THAT IMPAIRS THE REPUTATION OR INTEREST OF TRUSS-T STRUCTURES, INC.

DATE: 3/07/24
 DWG BY: KLS
 CHECKED BY: 
 PAGE: F1 OF F3
 JOB ID: 23-8981



REVISION	DATE
0	4/08/24
Issued For Construction	GGD

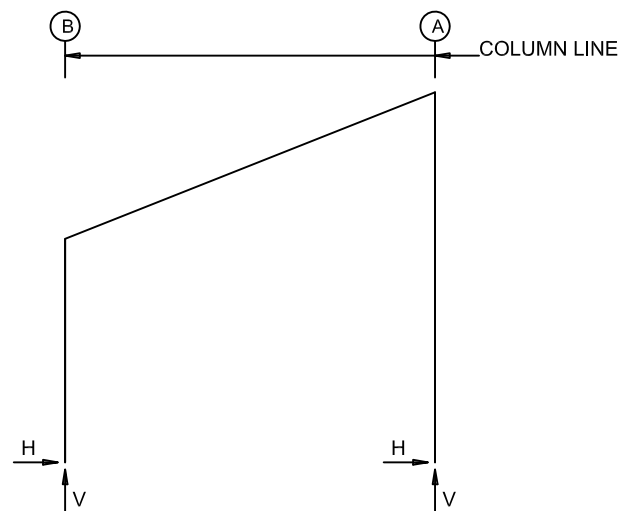
Truss-T
 PACIFIC BUILDING SYSTEMS
 MANUFACTURED BY TRUSS-T STRUCTURES, INC.
 2100 N. PACIFIC HWY. WOODBURN, OREGON 97071 PHONE 503 / 981-9581

PROJ: Dumpster Cover
 Elk City, ID 83525
 TITLE: Anchor Bolt Details
 DEALER: Idaho County

THIS DRAWING INCLUDING DESIGN PRINCIPLES IS THE PROPERTY OF TRUSS-T STRUCTURES, INC. AND SHALL NOT BE REPRODUCED, COPIED OR LOANED IN PART OR IN WHOLE WITHOUT WRITTEN PERMISSION. IT IS NOT TO BE USED IN ANY MANNER THAT IMPLIES ENDORSEMENT DIRECTLY OR INDIRECTLY TO TRUSS-T STRUCTURES, INC.

DATE: 3/07/24
 DWG BY: KLS
 CHECKED BY: JP
 PAGE: F2 OF F3
 JOB ID: 23-8981

FRAME LINES: 1 2 3 4



RIGID FRAME: MAXIMUM REACTIONS, ANCHOR BOLTS, & BASE PLATES

Frm Line	Col Line	Column_Reactions(k)						Bolt(in)		Base_Plate(in)			Grout (in)
		Load Id	Hmax H	V Vmax	Load Id	Hmin H	V Vmin	Qty	Dia	Width	Length	Thick	
1	B	3	2.5	12.6	6	-1.2	-0.3	4	0.750	6.000	11.00	0.500	0.0
		1	1.3	16.0	4	-0.4	-1.5						
1	A	7	1.5	-1.7	2	-1.7	14.7	4	0.750	6.000	11.50	0.500	0.0
		1	-1.3	20.3	5	0.8	-2.9						

RIGID FRAME: MAXIMUM REACTIONS, ANCHOR BOLTS, & BASE PLATES

Frm Line	Col Line	Column_Reactions(k)						Bolt(in)		Base_Plate(in)			Grout (in)
		Load Id	Hmax H	V Vmax	Load Id	Hmin H	V Vmin	Qty	Dia	Width	Length	Thick	
2*	B	3	4.4	24.4	6	-2.5	-0.3	4	0.750	6.000	11.50	0.500	0.0
		1	2.5	31.3	4	-0.7	-2.9						
2*	A	7	2.6	-2.6	2	-3.4	28.7	4	0.750	8.000	11.50	0.500	0.0
		1	-2.5	39.1	5	1.3	-4.8						
2*	Frame lines: 2 3												

RIGID FRAME: MAXIMUM REACTIONS, ANCHOR BOLTS, & BASE PLATES

Frm Line	Col Line	Column_Reactions(k)						Bolt(in)		Base_Plate(in)			Grout (in)
		Load Id	Hmax H	V Vmax	Load Id	Hmin H	V Vmin	Qty	Dia	Width	Length	Thick	
4	B	3	2.5	12.6	6	-1.2	-0.3	4	0.750	6.000	11.00	0.500	0.0
		1	1.3	16.0	4	-0.4	-1.5						
4	A	7	1.5	-1.7	2	-1.7	14.7	4	0.750	6.000	11.50	0.500	0.0
		1	-1.3	20.3	5	0.8	-2.9						

BUILDING BRACING REACTIONS

Loc	Wall Line	Col Line	± Reactions(k)				Panel_Shear (lb/ft)		Note
			Horz	Vert	Horz	Vert	Wind	Seis	
L_EW		1							(h)
F_SW	A	2,3	1.0	1.8	1.5	2.8			(b)
R_EW		4							(h)
B_SW	B	3,2	1.3	0.7	2.7	1.4			

(b)Wind bent in bay, base above finish floor
(h)Rigid frame at endwall

Reactions for seismic represent shear force, Eh

ANCHOR BOLT SUMMARY

Qty	Locate	Dia (in)	Type	Proj (in)
⊕ 32	Frame	3/4"	A36	2.00

RIGID FRAME: BASIC COLUMN REACTIONS (k)

Frame Line	Column Line	---Dead---		--Collateral-		---Live---		----Snow----		--Wind_Left1-		-Wind_Right1-	
		Horiz	Vert	Horiz	Vert	Horiz	Vert	Horiz	Vert	Horiz	Vert	Horiz	Vert
1	B	0.0	0.8	0.1	0.5	0.2	2.3	1.2	14.7	-0.7	-3.3	3.3	0.7
1	A	0.0	1.1	-0.1	0.6	-0.2	3.0	-1.2	18.6	-1.6	-2.1	1.5	-5.9
2*	B	0.1	1.3	0.1	1.1	0.4	4.6	2.3	29.0	-1.2	-6.1	5.4	0.8
2*	A	-0.1	1.9	-0.1	1.1	-0.4	5.7	-2.3	36.1	-3.3	-3.0	2.2	-9.9
4	B	0.0	0.8	0.1	0.5	0.2	2.3	1.2	14.7	-0.7	-3.3	3.3	0.7
4	A	0.0	1.1	-0.1	0.6	-0.2	3.0	-1.2	18.6	-1.6	-2.1	1.5	-5.9

Frame Line	Column Line	--Wind_Left2-		-Wind_Right2-		--Wind_Long1-		--Wind_Long2-		-Seismic_Left		Seismic_Right	
		Horiz	Vert	Horiz	Vert	Horiz	Vert	Horiz	Vert	Horiz	Vert	Horiz	Vert
1	B	-2.0	-1.2	2.1	2.7	1.2	-2.0	1.0	-1.8	-0.7	-0.8	0.7	0.8
1	A	-0.3	-0.2	2.6	-4.0	-0.9	-2.4	-1.1	-1.5	-0.3	0.8	0.3	-0.8
2*	B	-4.2	-1.8	3.1	4.7	2.4	-4.6	1.9	-4.2	-1.3	-1.5	1.3	1.5
2*	A	-0.3	0.2	4.4	-6.2	-1.7	-6.5	-2.1	-4.7	-0.6	1.5	0.6	-1.5
4	B	-2.0	-1.2	2.1	2.7	1.2	-2.0	1.0	-1.8	-0.7	-0.8	0.7	0.8
4	A	-0.3	-0.2	2.6	-4.0	-0.9	-2.4	-1.1	-1.5	-0.3	0.8	0.3	-0.8

Frame Line	Column Line	-Seismic_Long	
		Horiz	Vert
1	B	0.0	0.0
1	A	0.0	0.0
2*	B	0.0	-1.4
2*	A	0.0	-2.8
4	B	0.0	0.0
4	A	0.0	0.0

2* Frame lines: 2 3

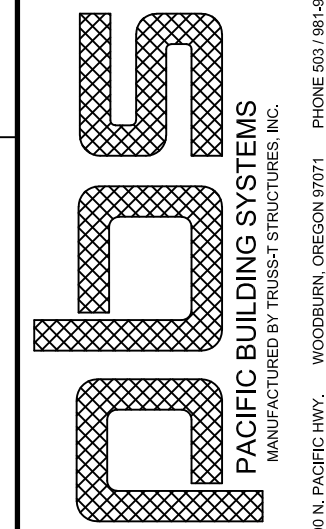
NOTES FOR REACTIONS

- All loading conditions are examined and only maximum/minimum H or V and the corresponding H or V are reported.
- Positive reactions are as shown in the sketch. Foundation loads are in opposite directions.
- Bracing reactions are in the plane of the brace with the H pointing away from the braced bay. The vertical reaction is downward.
- Building reactions are based on the following building data:

Width (ft)	= 20'-0"
Length (ft)	= 60'-0"
Eave Height (ft)	= 12'-1" / 20'-0"
Roof Slope (rise/12)	= 4.75:12
Dead Load (psf)	= 3.40
Collateral Load (psf)	= 5.00
Live Load (psf)	= 20.00
Roof Snow Load (psf)	= 126.00
Ground Snow Load (psf)	= 150.00
Wind Speed (mph)	= 104
Wind Code	= IBC 18
Exposure	= C
Closed/Open	= Partially Enclosed
Importance Seismic	= 1.00
Importance Snow (Is)	= 1.00
Seismic Zone	= C
Seismic Coeff (Fa*Ss)	= 0.461

- Loading conditions are:
 - 1 Dead+Collateral+Snow+Slide_Snow
 - 2 Dead+Collateral+0.75Snow+0.45Wind_Left1+0.75Slide_Snow
 - 3 Dead+Collateral+0.75Snow+0.45Wind_Right1+0.75Slide_Snow
 - 4 0.6Dead+0.6Wind_Left1
 - 5 0.6Dead+0.6Wind_Right1
 - 6 0.6Dead+0.6Wind_Left2
 - 7 0.6Dead+0.6Wind_Right2

DATE	REVISION	Issued For
4/08/24	0	GGD
		Construction



PROJ: Dumpster Cover
Elk City, ID 83525
TITLE: Anchor Bolt Reactions
DEALER: Idaho County

THIS DRAWING INCLUDING DESIGN PRINCIPLES IS THE PROPERTY OF TRUSS-T STRUCTURES, INC. AND SHALL NOT BE REPRODUCED, COPIED OR LOANED IN PART OR IN WHOLE WITHOUT WRITTEN PERMISSION. IT IS NOT TO BE USED IN ANY MANNER THAT MAY CONSTITUTE A BREACH OF AGREEMENT DIRECTLY OR INDIRECTLY TO TRUSS-T STRUCTURES, INC.

DATE: 3/07/24
DWG BY: KLS
CHECKED BY: JP
PAGE: F3 OF F3
JOB ID: 23-8981

EXTENSION/CANOPY BOLTS				
ROOF PLAN				
MARK	QUAN	TYPE	DIA	LENGTH
EB-1	4	A325	5/8"	2"
EB-2	4	A325	5/8"	2"
EB-3	4	A325	5/8"	1 3/4"

MEMBER TABLE	
ROOF PLAN	
MARK	PART
EB-1	W8X10
EB-2	W12X14
EB-3	W8X10
P-1	10Z14
P-2	10Z14
P-3	10Z14
P-4	10Z14
P-5	10Z14
P-6	10Z14
E-1	10Z12
E-2	10Z12
E-3	10Z12
E-4	10Z14
E-5	10Z14
E-6	10Z14
CB-2	1/2 ROD

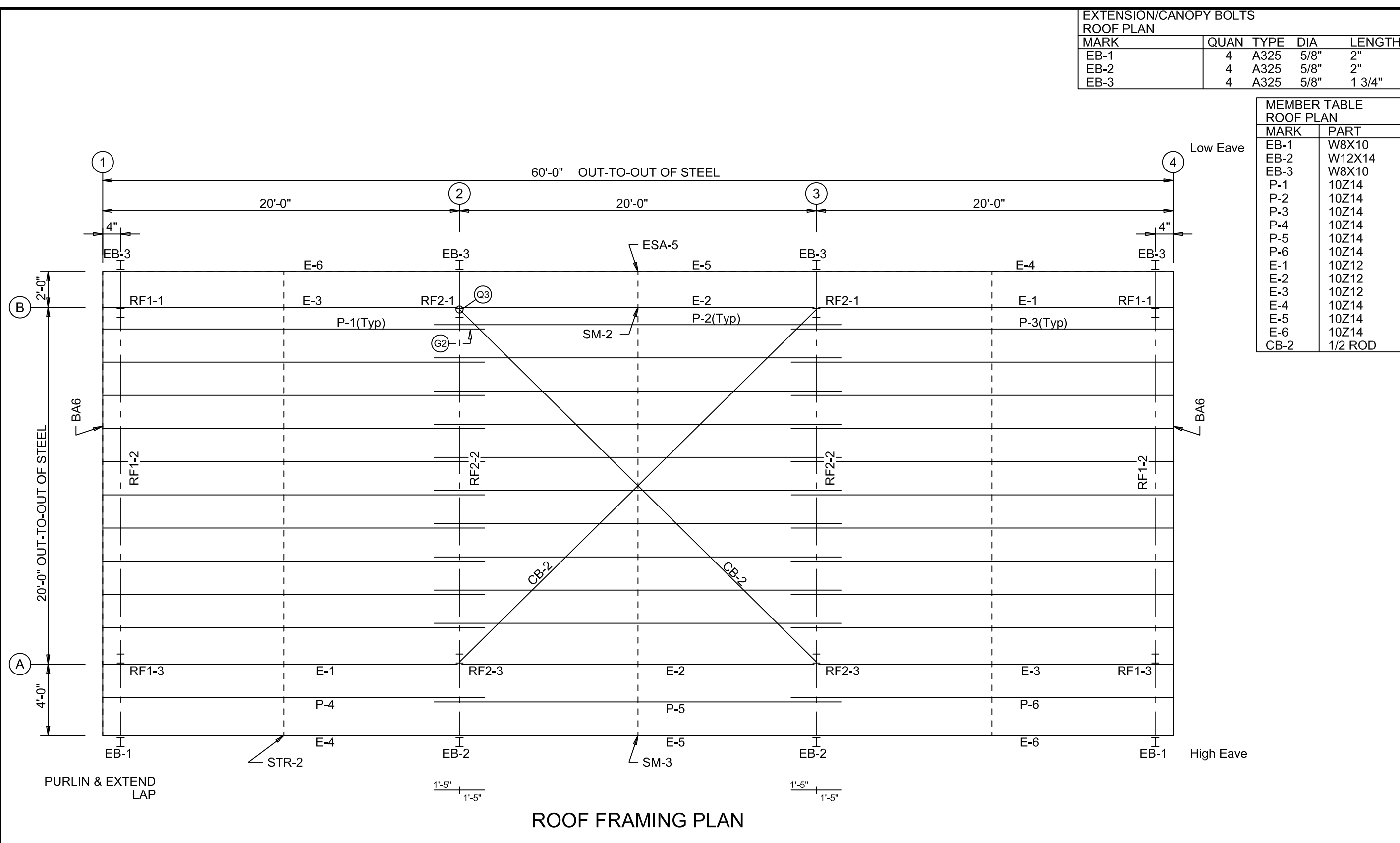
DATE	4/08/24
ISSUED FOR	GGD
REVISION	0
ISSUED FOR	Construction

PACIFIC BUILDING SYSTEMS
 MANUFACTURED BY TRUSS-T STRUCTURES, INC.
 2100 N. PACIFIC HWY. WOODBURN, OREGON 97071 PHONE 503 / 981-9581

PROJ: Dumpster Cover
 Elk City, ID 83525
 TITLE: Roof Sheeting
 DEALER: Idaho County

THIS DRAWING INCLUDING DESIGN PRINCIPLES IS THE PROPERTY OF TRUSS-T STRUCTURES, INC. AND SHALL NOT BE REPRODUCED, COPIED OR LOANED IN PART OR IN WHOLE WITHOUT WRITTEN PERMISSION. IT IS NOT TO BE USED IN ANY MANNER THAT MAY CONSTITUTE A DETRIMENT DIRECTLY OR INDIRECTLY TO TRUSS-T STRUCTURES, INC.

DATE: 3/07/24
 DWG BY: KLS
 CHECKED BY: JP
 PAGE: E1 OF E9
 JOB ID: 23-8981

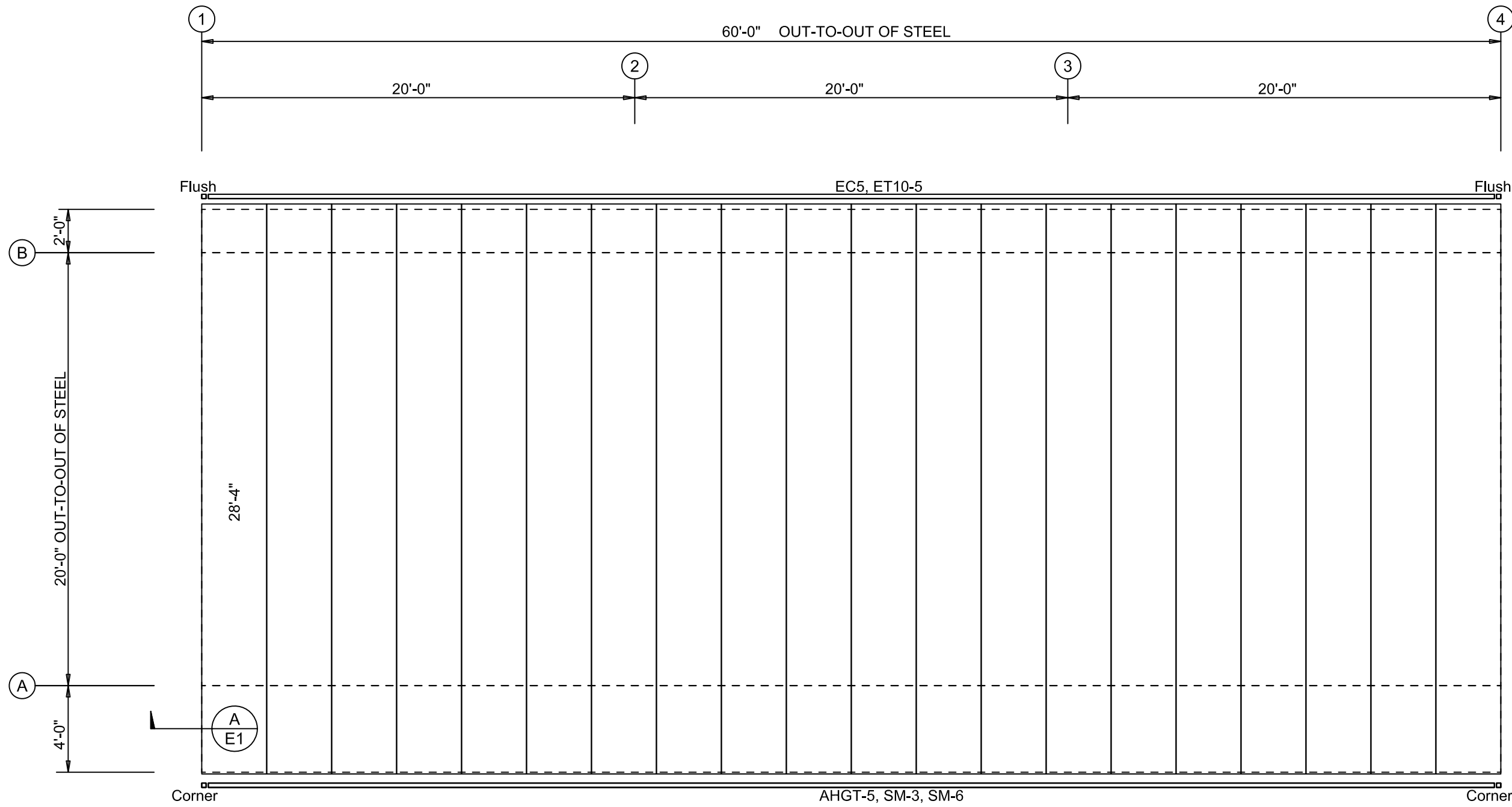


ROOF FRAMING PLAN

PURLIN & EXTEND LAP

1'-5" / 1'-5"

1'-5" / 1'-5"

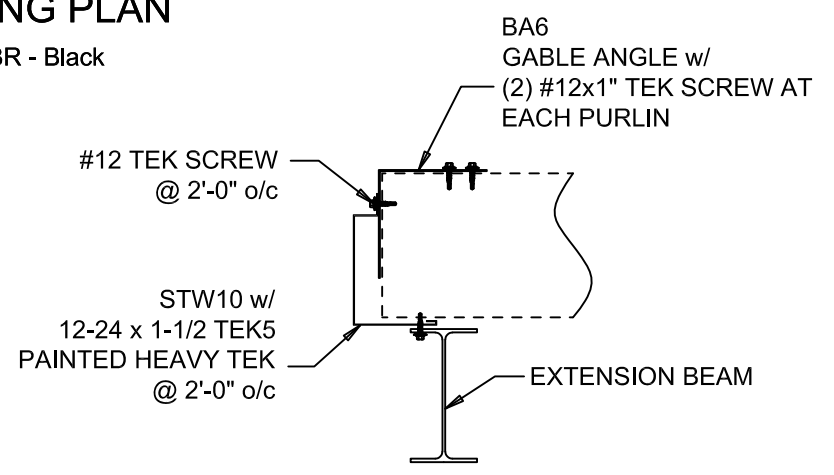


Low Eave

High Eave

ROOF SHEETING PLAN

PANELS: 26 Ga. PBR - Black



A GABLE AT EXTENSION
E1 TYPICAL

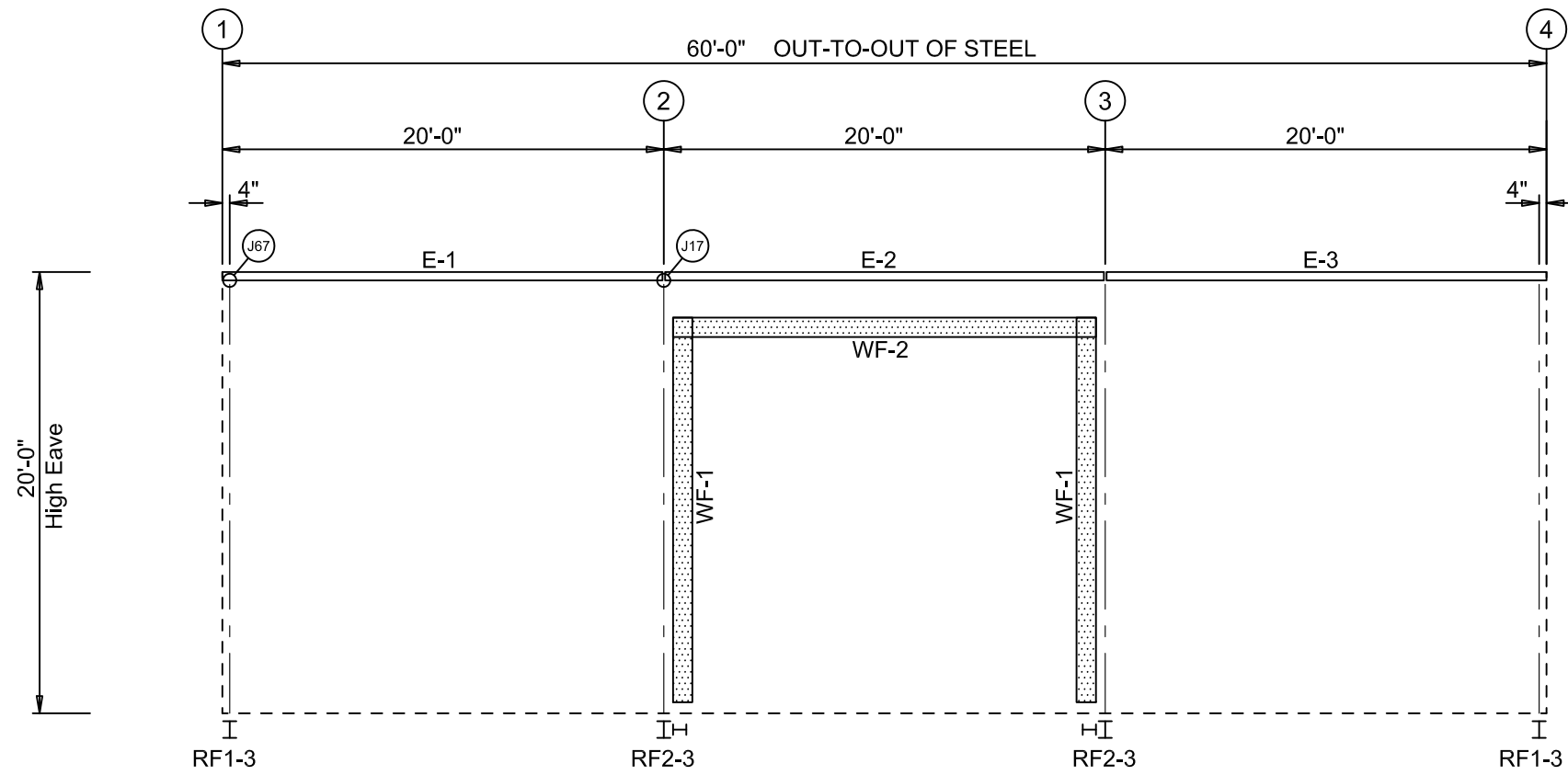
REVISION	DATE
0	4/08/24
Issued For Construction	GGD

Logo
PACIFIC BUILDING SYSTEMS
 MANUFACTURED BY TRUSS-T STRUCTURES, INC.
 2100 N. PACIFIC HWY. WOODBURN, OREGON 97071 PHONE 503 / 981-9581

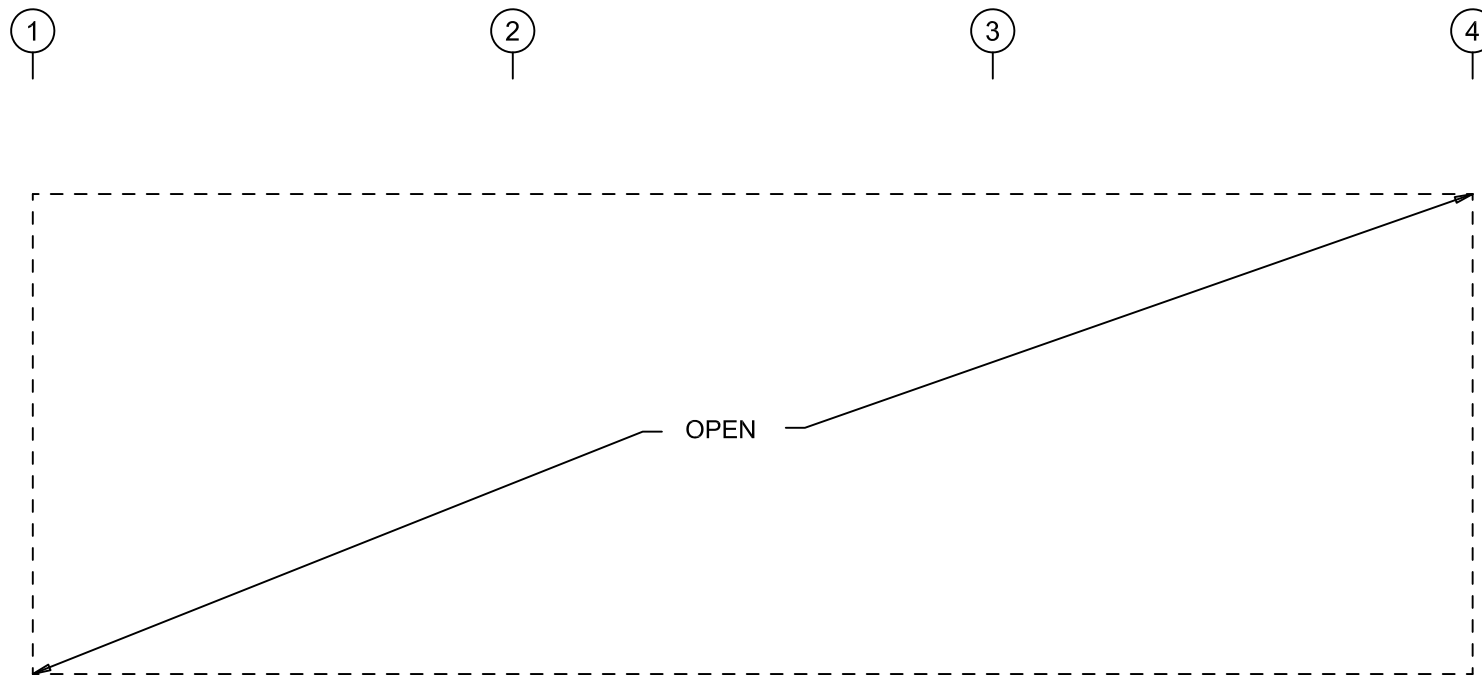
PROJ:	Dumpster Cover Elk City, ID 83525
TITLE:	Roof Sheeting
DEALER:	Idaho County

THIS DRAWING INCLUDING DESIGN PRINCIPLES IS THE PROPERTY OF TRUSS-T STRUCTURES, INC. AND SHALL NOT BE REPRODUCED, COPIED OR LOANED IN PART OR IN WHOLE WITHOUT WRITTEN PERMISSION. IT IS NOT TO BE USED IN ANY MANNER THAT MAY CAUSE DETRIMENT DIRECTLY OR INDIRECTLY TO TRUSS-T STRUCTURES, INC.

DATE: 3/07/24
 DWG BY: KLS
 CHECKED BY: JP
 PAGE: E2 OF E9
 JOB ID: 23-8981



SIDEWALL FRAMING: FRAME LINE A

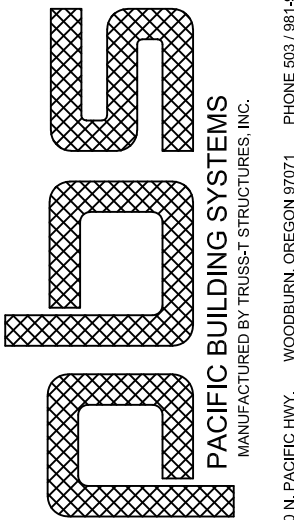


SIDEWALL TRIM: FRAME LINE A

BOLT TABLE FRAME LINE A				
LOCATION	QUAN	TYPE	DIA	LENGTH
WF-1 - WF-2	8	A325	3/4"	2 1/2"
WF-1 - RF2-3	12	A325	5/8"	1 1/2"

MEMBER TABLE FRAME LINE A	
MARK	PART
WF-1	W100622
WF-2	W100622
E-1	10Z12
E-2	10Z12
E-3	10Z12

REVISION	DATE	ISSUED FOR
0	4/08/24	GGD Construction



2100 N. PACIFIC HWY. WOODBURN, OREGON 97071 PHONE 503 / 981-9581

PROJ: Dumpster Cover
Elk City, ID 83525
TITLE: Sidewall Framing
DEALER: Idaho County

THIS DRAWING INCLUDING DESIGN PRINCIPLES, IS THE PROPERTY OF TRUSS-T STRUCTURES, INC. AND SHALL NOT BE REPRODUCED, COPIED OR LOANED IN PART OR IN WHOLE WITHOUT WRITTEN PERMISSION. IT IS NOT TO BE USED IN ANY MANNER THAT MAY CAUSE DETRIMENT DIRECTLY OR INDIRECTLY TO TRUSS-T STRUCTURES, INC.

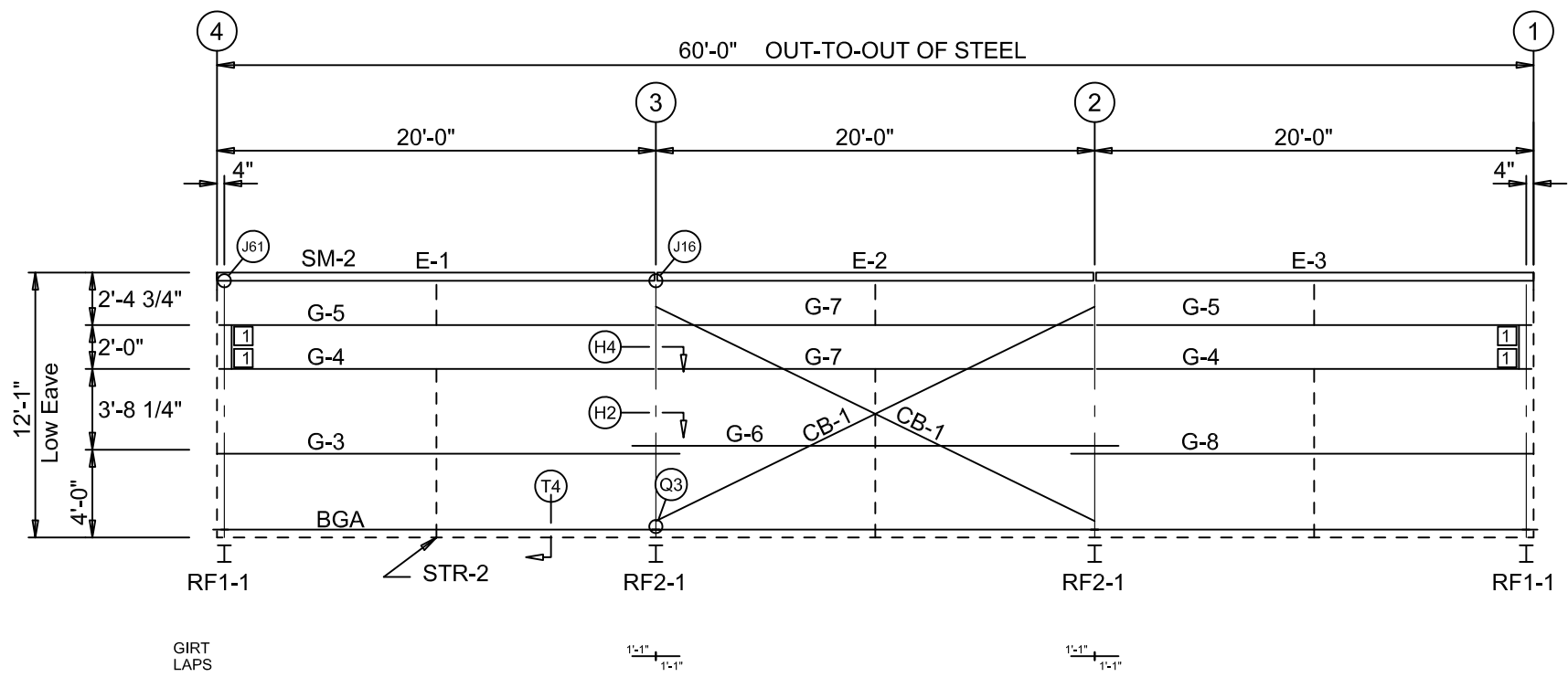
DATE: 3/07/24

DWG BY: KLS

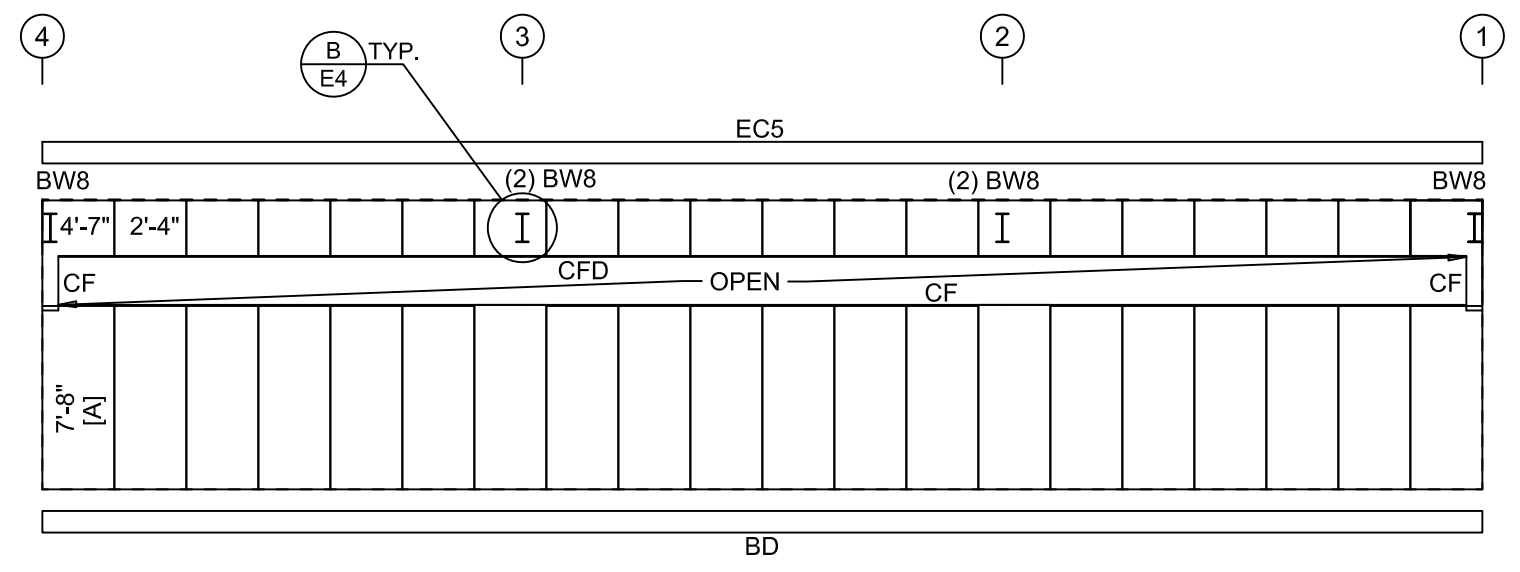
CHECKED BY: *JP*

PAGE: E3 OF E9

JOB ID: 23-8981



SIDEWALL FRAMING: FRAME LINE B



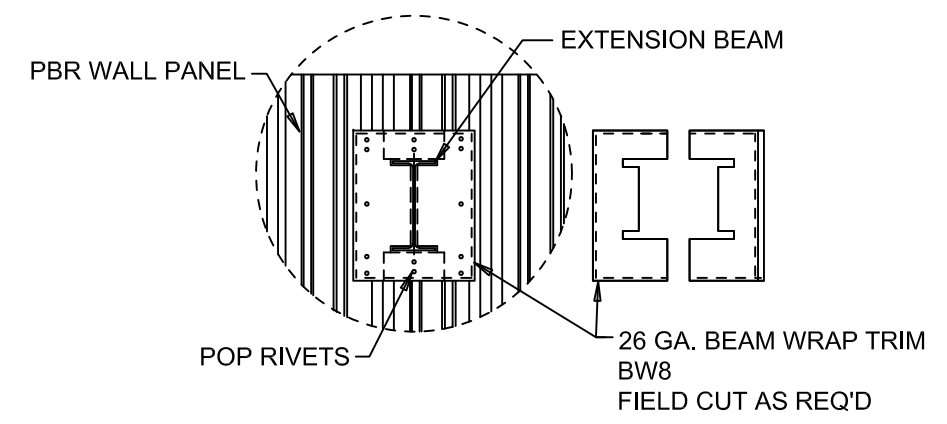
SIDEWALL SHEETING & TRIM: FRAME LINE B

PANELS: 26 Ga. PBR - Jackson Copper
 [A] WAINSCOT PANELS: 26 Ga. PBR - Benton Beige

MEMBER TABLE FRAME LINE B	
MARK	PART
DJ-1	8C16
E-1	10Z12
E-2	10Z12
E-3	10Z12
G-3	8Z16
G-4	8C16
G-5	8C16
G-6	8Z16
G-7	8C16
G-8	8Z16
CB-1	5/8 ROD

CONNECTION PLATES FRAME LINE B	
ID	MARK/PART
1	AL-1

REVISION	DATE	ISSUED FOR
0	4/08/24	GGD Construction



**B
E4** BEAM WRAP DETAIL

WORLDWIDE
 PACIFIC BUILDING SYSTEMS
 MANUFACTURED BY TRUSS-T STRUCTURES, INC.
 2100 N. PACIFIC HWY. WOODBURN, OREGON 97071 PHONE 503 / 981-9581

PROJ: Dumpster Cover
 Elk City, ID 83525
 TITLE: Sidewall Framing
 DEALER: Idaho County

THIS DRAWING INCLUDING DESIGN PRINCIPLES IS THE PROPERTY OF TRUSS-T STRUCTURES, INC. AND SHALL NOT BE REPRODUCED, COPIED OR LOANED IN PART OR IN WHOLE WITHOUT WRITTEN PERMISSION. IT IS NOT TO BE USED IN ANY MANNER THAT MAY CAUSE DETRIMENT DIRECTLY OR INDIRECTLY TO TRUSS-T STRUCTURES, INC.

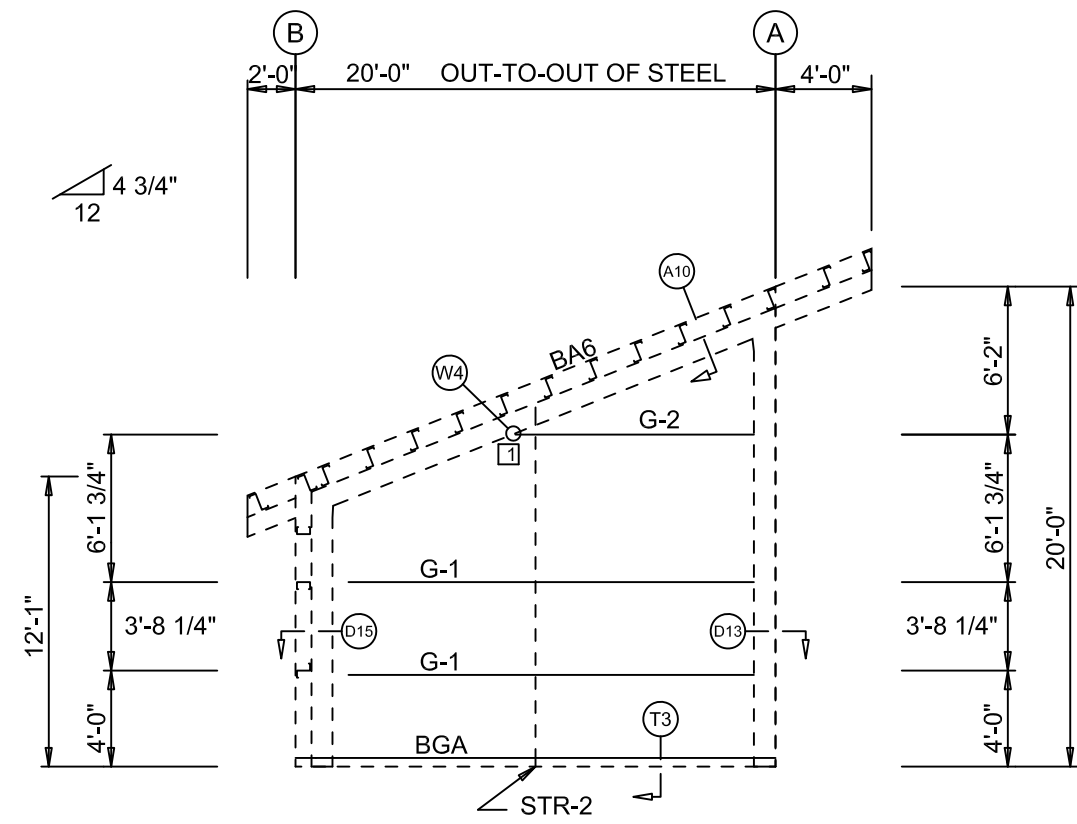
DATE: 3/07/24
 DWG BY: KLS
 CHECKED BY: JP
 PAGE: E4 OF E9
 JOB ID: 23-8981

MEMBER TABLE	
FRAME LINE 1	
MARK	PART
G-1	8Z16
G-2	8Z16

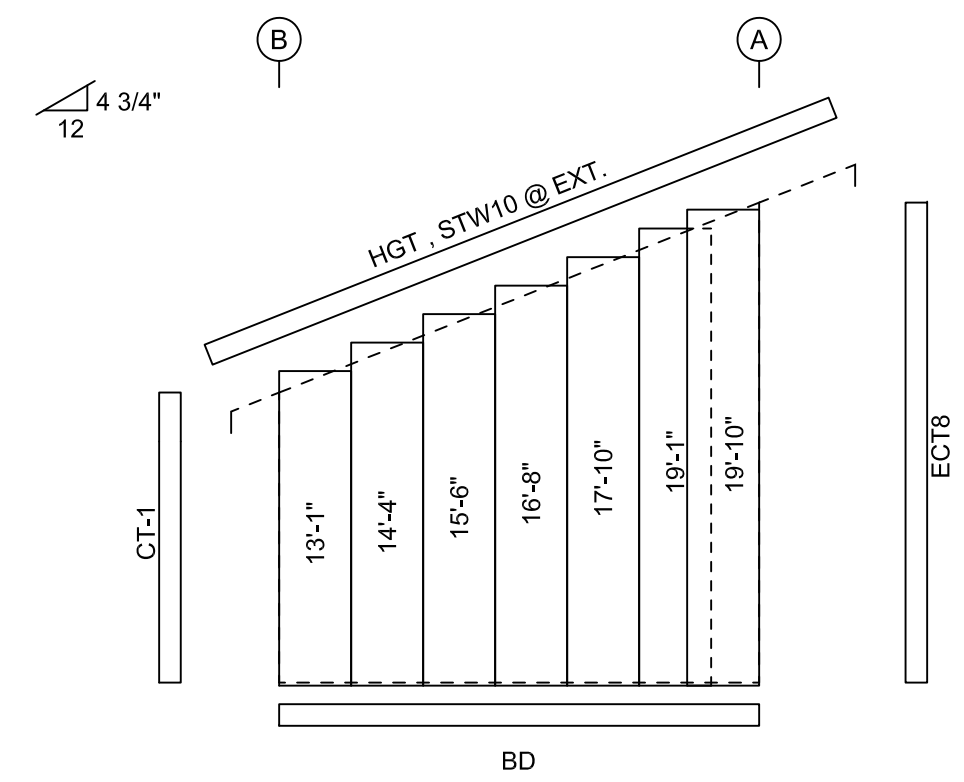
CONNECTION PLATES	
FRAME LINE 1	
ID	MARK/PART
1	AL-1

REVISION	DATE
0	4/08/24

Issued For Construction	GGD
-------------------------	-----



ENDWALL FRAMING: FRAME LINE 1



ENDWALL SHEETING & TRIM: FRAME LINE 1

PANELS: 26 Ga. PBR - Jackson Copper

PACIFIC BUILDING SYSTEMS
 MANUFACTURED BY TRUSS-T STRUCTURES, INC.
 2100 N. PACIFIC HWY. WOODBURN, OREGON 97071 PHONE 503 / 981-9581

PROJ: Dumpster Cover
 Elk City, ID 83525
 TITLE: Endwall Framing
 DEALER: Idaho County

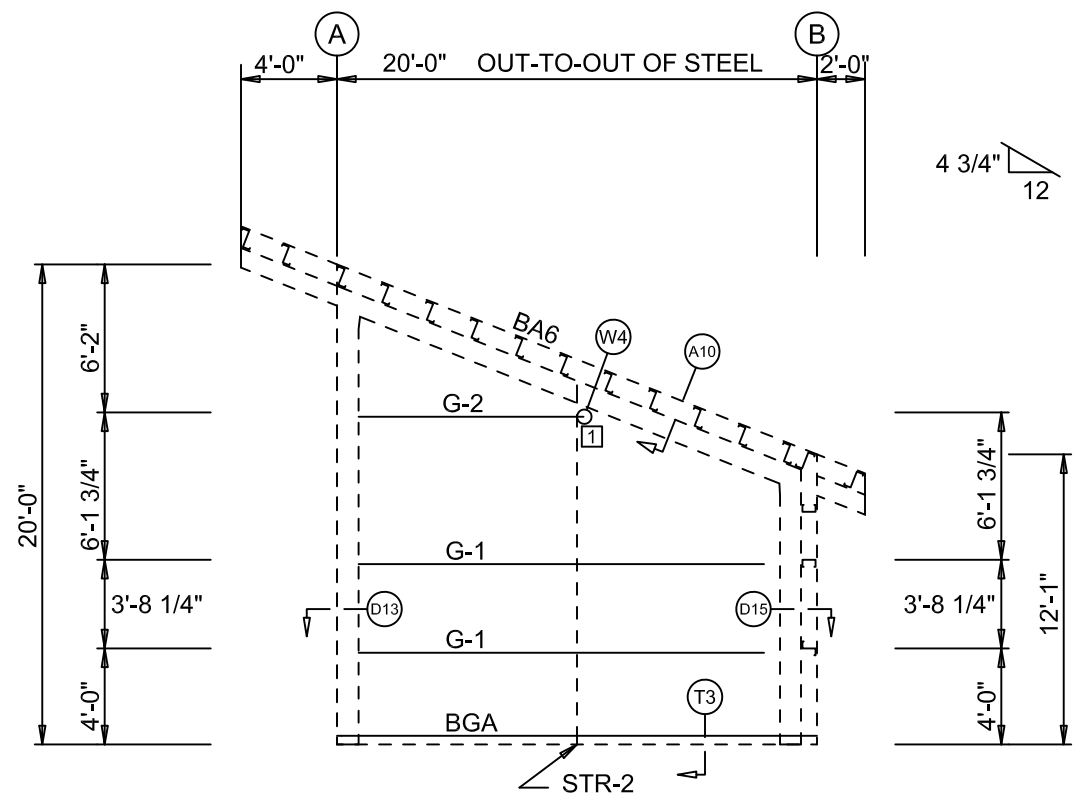
THIS DRAWING INCLUDING DESIGN PRINCIPLES IS THE PROPERTY OF TRUSS-T STRUCTURES, INC. AND SHALL NOT BE REPRODUCED, COPIED OR LOANED IN PART OR IN WHOLE WITHOUT WRITTEN PERMISSION. TRUSS-T STRUCTURES, INC. SHALL NOT BE RESPONSIBLE FOR DETRIMENT DIRECTLY OR INDIRECTLY TO TRUSS-T STRUCTURES, INC.

DATE: 3/07/24
 DWG BY: KLS
 CHECKED BY: JP
 PAGE: E5 OF E9
 JOB ID: 23-8981

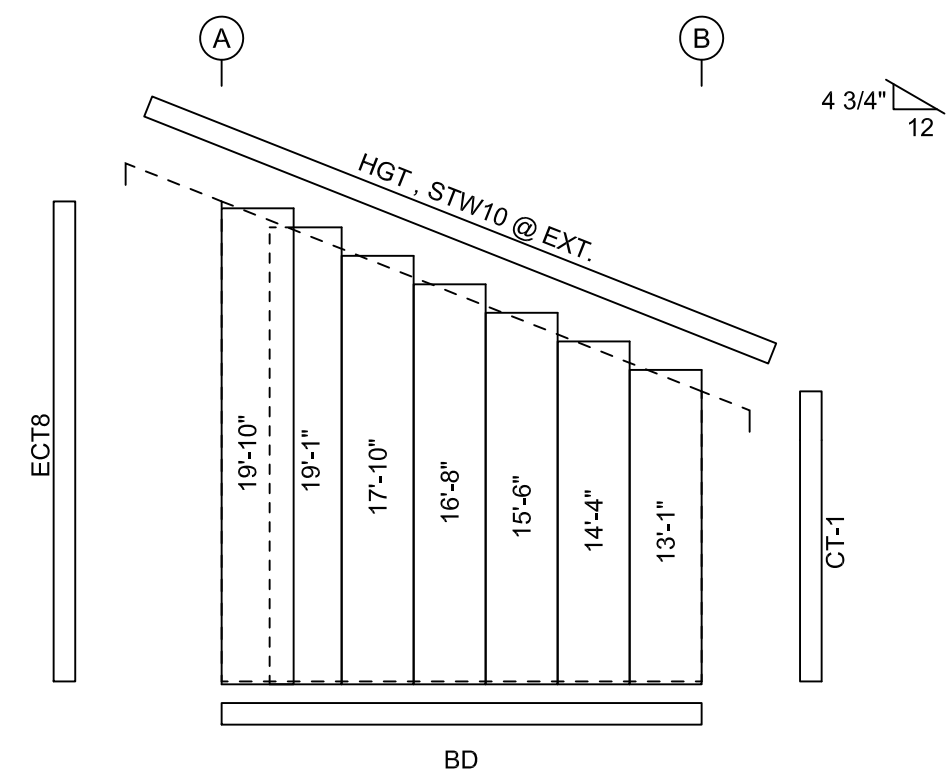
MEMBER TABLE FRAME LINE 4	
MARK	PART
G-1	8Z16
G-2	8Z16

CONNECTION PLATES FRAME LINE 4	
ID	MARK/PART
1	AL-1

REVISION	DATE	ISSUED FOR
0	4/08/24	GGD Construction



ENDWALL FRAMING: FRAME LINE 4



ENDWALL SHEETING & TRIM: FRAME LINE 4
PANELS: 26 Ga. PBR - Jackson Copper

Truss-T
PACIFIC BUILDING SYSTEMS
MANUFACTURED BY TRUSS-T STRUCTURES, INC.
2100 N. PACIFIC HWY. WOODBURN, OREGON 97071 PHONE 503 / 981-9581

PROJ: Dumpster Cover
Elk City, ID 83525

TITLE: Endwall Framing

DEALER: Idaho County

THIS DRAWING INCLUDING DESIGN PRINCIPLES IS THE PROPERTY OF TRUSS-T STRUCTURES, INC. AND SHALL NOT BE REPRODUCED, COPIED OR LOANED IN PART OR IN WHOLE WITHOUT WRITTEN PERMISSION. IT IS NOT TO BE USED IN ANY MANNER THAT MAY CAUSE DETRIMENT DIRECTLY OR INDIRECTLY TO TRUSS-T STRUCTURES, INC.

DATE: 3/07/24

DWG BY: KLS

CHECKED BY: *JP*

PAGE: E6 OF E9

JOB ID: 23-8981

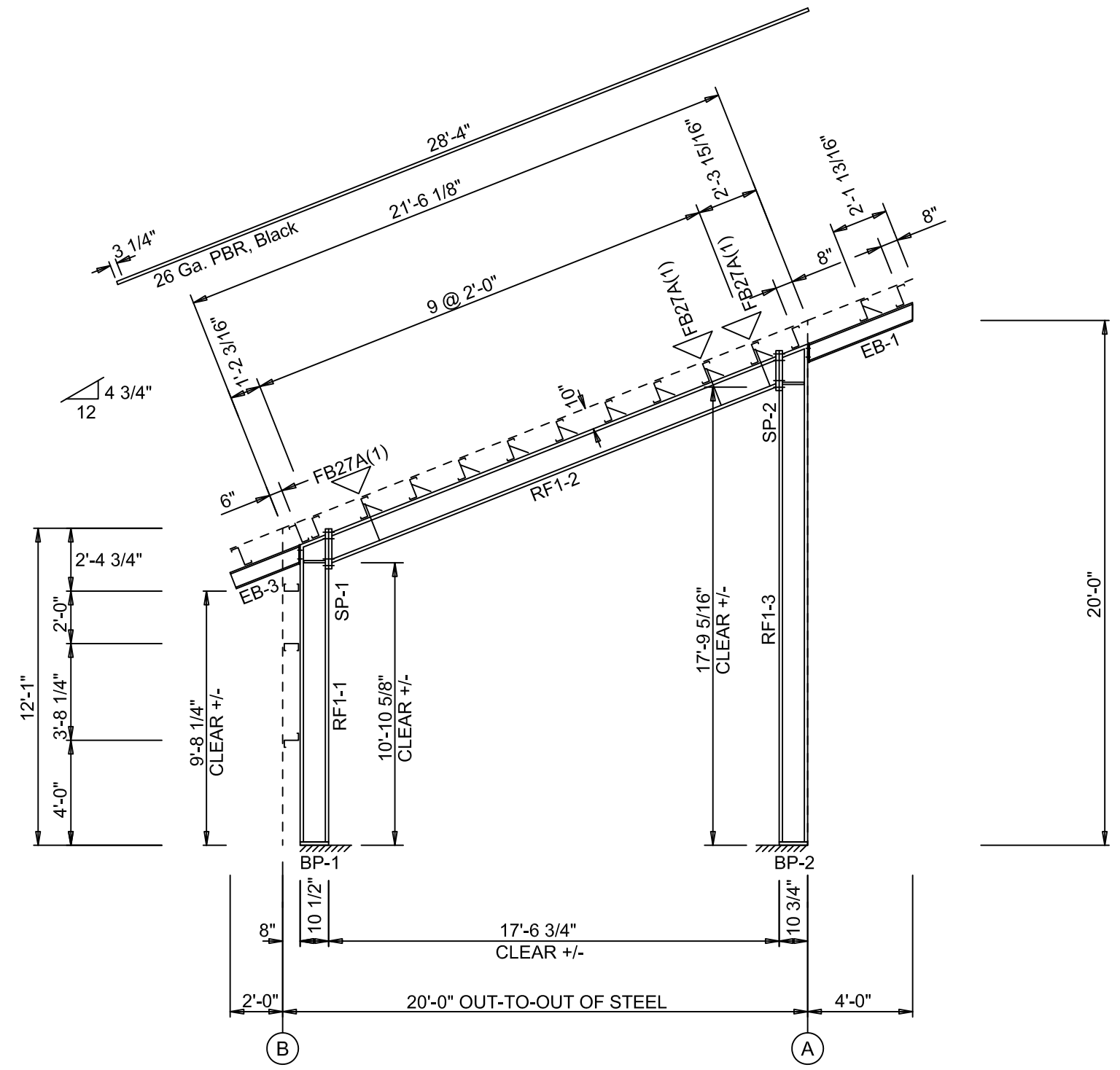
SPLICE PLATE & BOLT TABLE									
Mark	Qty			Type	Dia	Length	Width	Thick	Length
	Top	Bot	Int						
SP-1	4	4	0	A325	3/4"	2"	6"	1/2"	1'-9 3/4"
SP-2	4	4	0	A325	3/4"	2 1/2"	6"	3/4"	1'-9 3/4"

BASE PLATE TABLE			
Col Mark	Plate Size		
	Width	Thick	Length
BP-1	6"	1/2"	11"
BP-2	6"	1/2"	11 1/2"

MEMBER TABLE							
Mark	Weight	Web Depth		Web Plate		Outside Flange W x Thk x Length	Inside Flange W x Thk x Length
		Start/End	Thick	Length	Length		
RF1-1	218	10.0/10.0	0.135	111.9	6 x 1/4" x 130.4	6 x 1/4" x 123.9	
RF1-2	360	10.0/10.0	0.188	28.8	6 x 1/4" x 10.9	6 x 1/4" x 224.7	
		10.0/10.0	0.135	84.7	6 x 1/4" x 224.7		
RF1-3	424	10.0/10.0	0.135	144.0	6 x 1/4" x 10.9	6 x 1/2" x 207.1	
		10.0/10.0	0.250	33.3			
		10.0/10.0	0.135	144.0			
EB-1	58	W8X10					
EB-3	42	W8X10					

DATE	4/08/24
ISSUED FOR	Construction
REVISION	0

▽ FLANGE BRACES: Both Sides(U.N.)
 FBxxA(1): xx=length(in)
 A - L2X2X1/8



Truss
 PACIFIC BUILDING SYSTEMS
 MANUFACTURED BY TRUSS-T STRUCTURES, INC.
 2100 N. PACIFIC HWY. WOODBURN, OREGON 97071 PHONE 503 / 981-9581

PROJ: Dumpster Cover
 Elk City, ID 83525
 TITLE: Rigid Frame Elevation
 DEALER: Idaho County

THIS DRAWING INCLUDING DESIGN PRINCIPLES, IS THE PROPERTY OF TRUSS-T STRUCTURES, INC. AND SHALL NOT BE REPRODUCED, COPIED OR LOANED IN PART OR IN WHOLE WITHOUT WRITTEN PERMISSION. IT IS NOT TO BE USED IN ANY MANNER THAT MAY CONSTITUTE A DISREPUTATION DIRECTLY OR INDIRECTLY TO TRUSS-T STRUCTURES, INC.

DATE: 3/07/24
 DWG BY: KLS
 CHECKED BY: JP
 PAGE: E7 OF E9
 JOB ID: 23-8981

RIGID FRAME ELEVATION: FRAME LINE 1 4

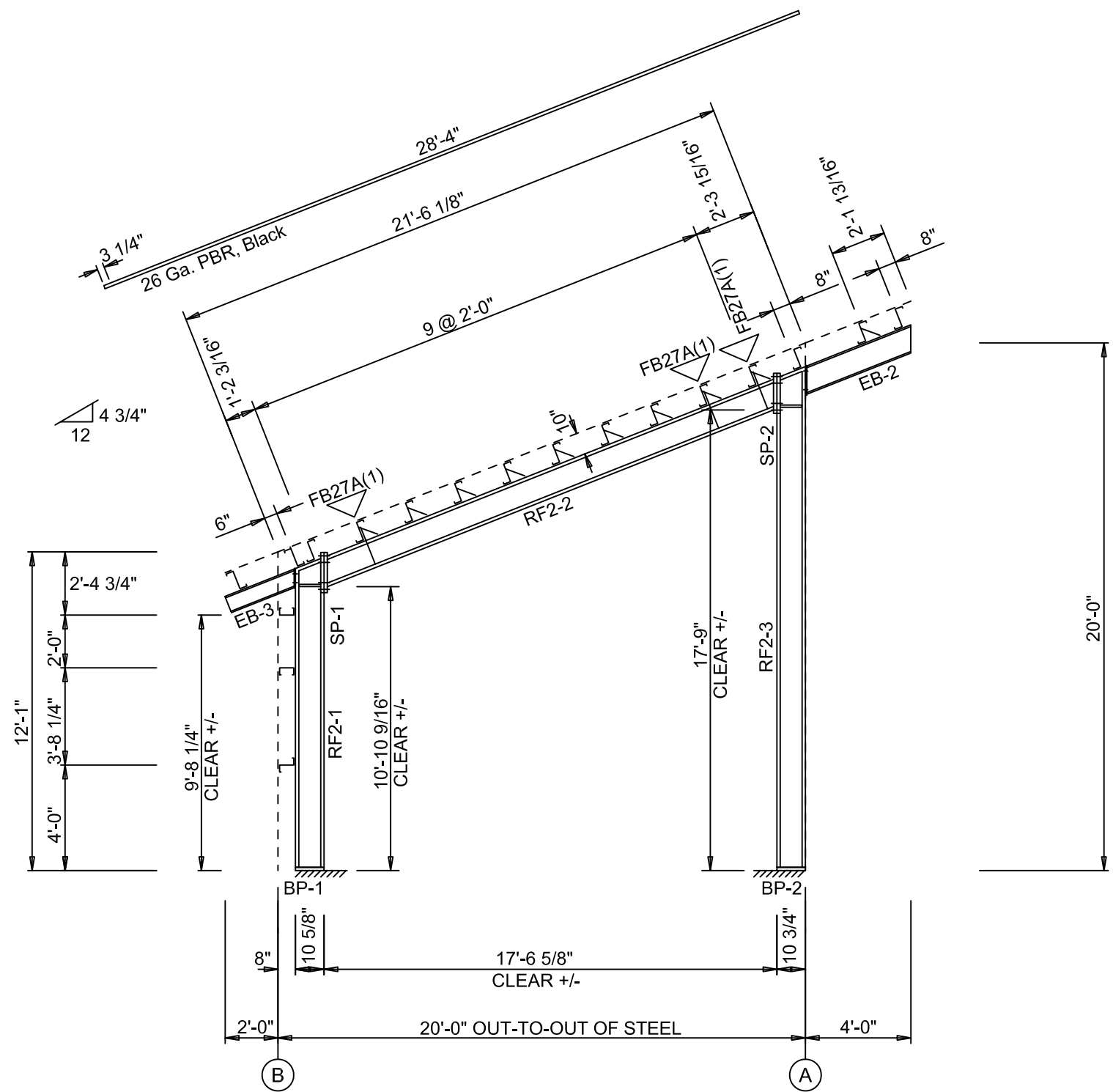
SPLICE PLATE & BOLT TABLE									
Mark	Qty			Type	Dia	Length	Width	Thick	Length
	Top	Bot	Int						
SP-1	4	4	0	A325	3/4"	2 1/2"	6"	3/4"	1'-9 3/4"
SP-2	4	4	0	A325	3/4"	2 1/2"	8"	3/4"	1'-9 3/4"

BASE PLATE TABLE			
Col Mark	Plate Size		
	Width	Thick	Length
BP-1	6"	1/2"	11 1/2"
BP-2	8"	1/2"	11 1/2"

MEMBER TABLE						
Mark	Weight	Web Depth	Web Plate		Outside Flange W x Thk x Length	Inside Flange W x Thk x Length
		Start/End	Thick	Length		
RF2-1	271	10.0/10.0	0.135	111.9	6 x 1/4" x 130.4	6 x 3/8" x 123.9
		10.0/10.0	0.375	28.7		
RF2-2	474	10.0/10.0	0.135	84.1	6 x 3/8" x 224.0	6 x 3/8" x 224.0
		10.0/10.0	0.135	144.0		
RF2-3	570	10.0/10.0	0.375	33.3	6 x 3/8" x 11.0	8 x 3/8" x 206.9
		10.0/10.0	0.188	144.0		
		10.0/10.0	0.188	50.9		
EB-2	81	W12X14				
EB-3	42	W8X10				

DATE	4/08/24
ISSUED FOR	Construction
REVISION	0

▽ FLANGE BRACES: Both Sides(U.N.)
 FBxxA(1): xx=length(in)
 A - L2X2X1/8



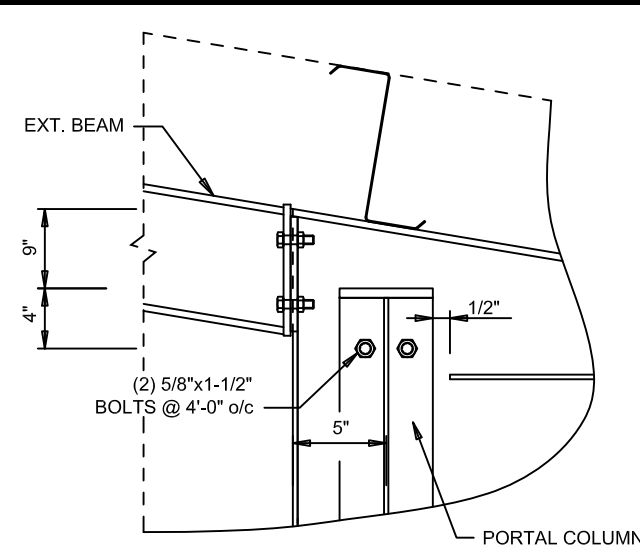
RIGID FRAME ELEVATION: FRAME LINE 2 3

Truss
 PACIFIC BUILDING SYSTEMS
 MANUFACTURED BY TRUSS-T STRUCTURES, INC.
 2100 N. PACIFIC HWY. WOODBURN, OREGON 97071 PHONE 503 / 981-9581

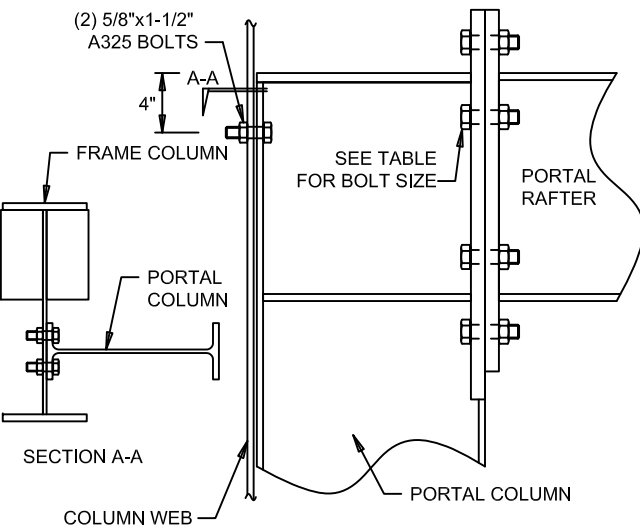
PROJ: Dumpster Cover
 Elk City, ID 83525
 TITLE: Rigid Frame Elevation
 DEALER: Idaho County

THIS DRAWING INCLUDING DESIGN PRINCIPLES IS THE PROPERTY OF TRUSS-T STRUCTURES, INC. AND SHALL NOT BE REPRODUCED, COPIED OR LOANED IN PART OR IN WHOLE WITHOUT WRITTEN PERMISSION. IT IS NOT TO BE USED IN ANY MANNER THAT MAY CAUSE DETRIMENT DIRECTLY OR INDIRECTLY TO TRUSS-T STRUCTURES, INC.

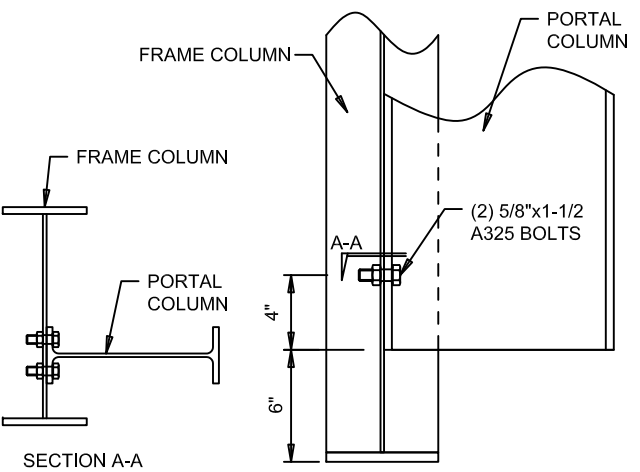
DATE: 3/07/24
 DWG BY: KLS
 CHECKED BY: JP
 PAGE: E8 OF E9
 JOB ID: 23-8981



HAUNCH DETAIL AT PORTAL



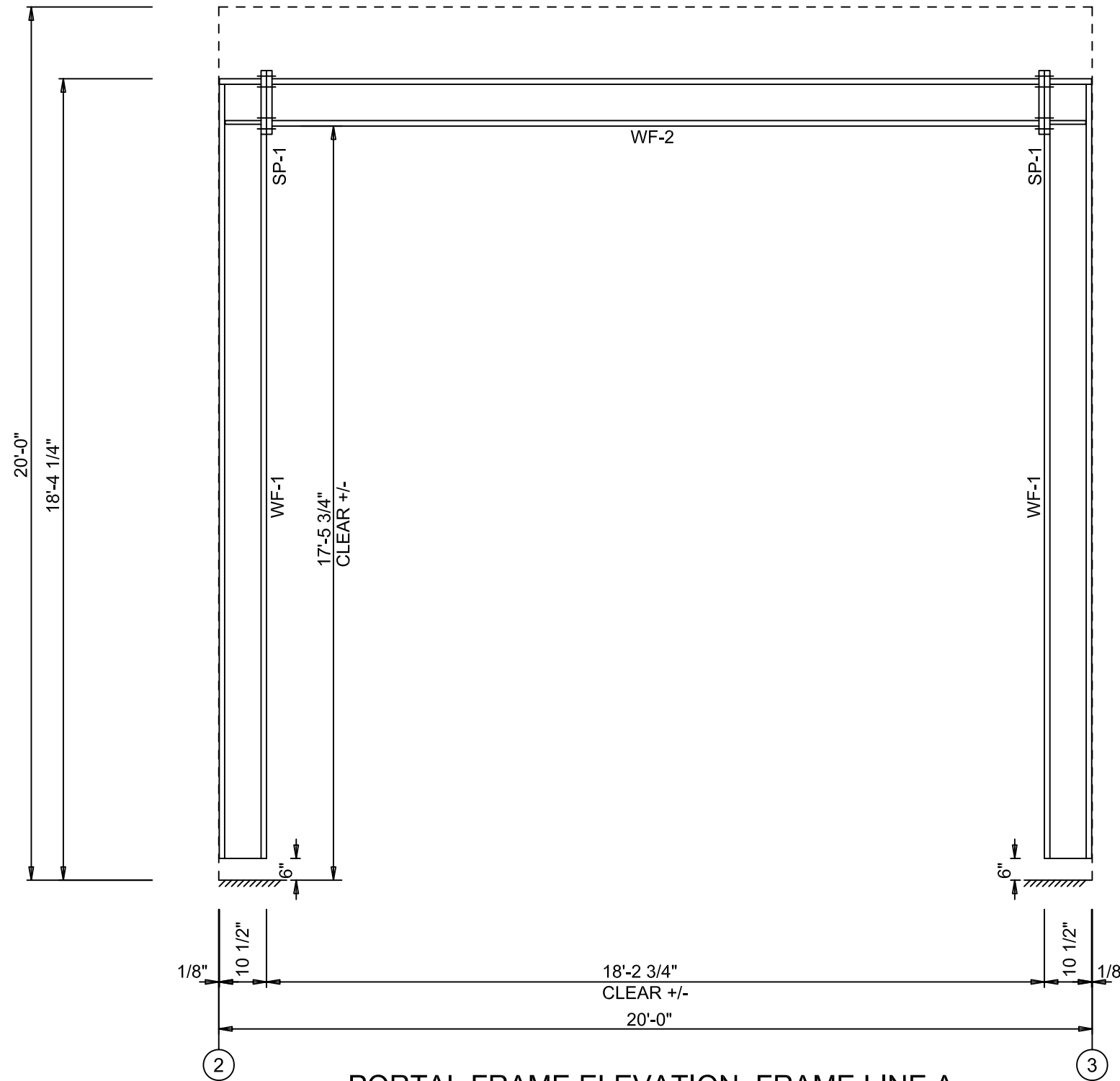
PORTAL FRAME CONNECTION



PORTAL FRAME CONNECTION

SPLICE PLATES & BOLTS								
Splice Mark	Quan		----Bolt----			Plate Size		
	Top/	Bot	Type	Dia	Length	Width	Thick	Length
SP- 1	4	4	A325	3/4"	2 1/2"	6"	3/4"	1'-5 1/4"

MEMBER SIZE TABLE		
MARK	MEMBER	LENGTH
WF-2	W100622	18'-1 3/4"
WF-1	W100622	17'-10 1/4"



PORTAL FRAME ELEVATION: FRAME LINE A

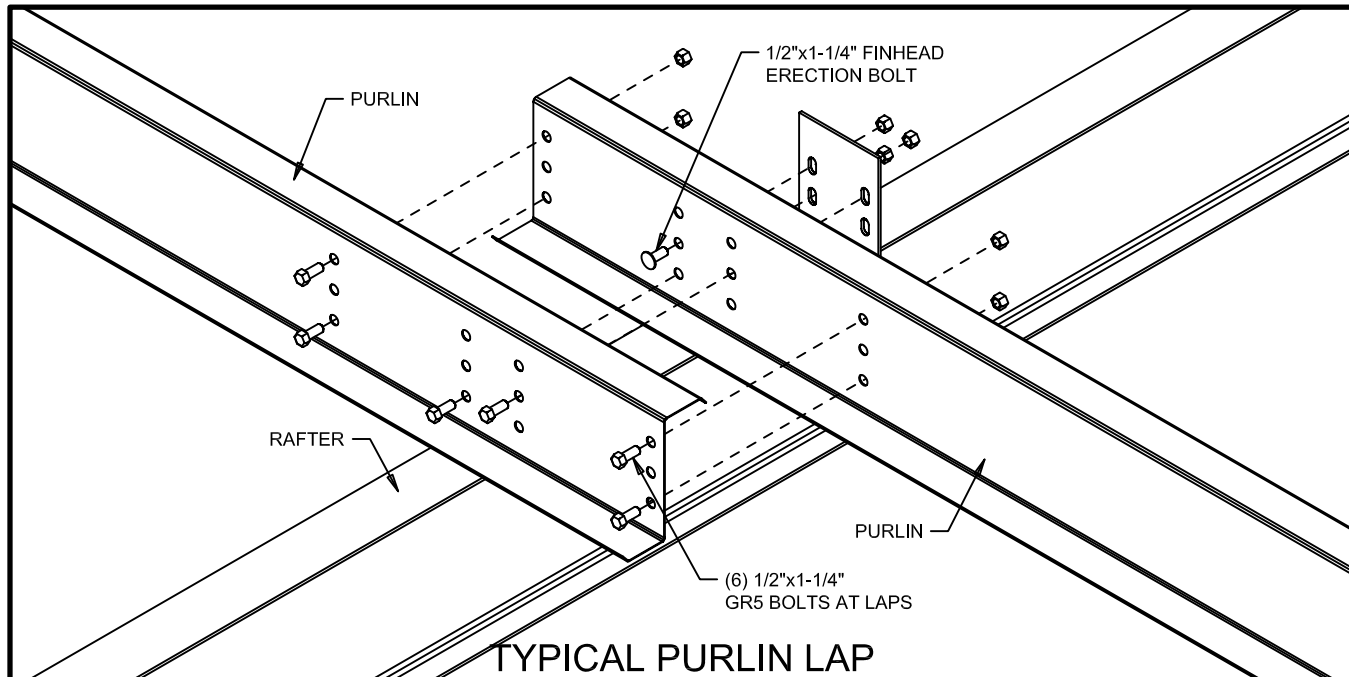
REVISION	DATE	ISSUED FOR
0	4/08/24	GGD Construction

WORLDWIDE
PACIFIC BUILDING SYSTEMS
 MANUFACTURED BY TRUSS-T STRUCTURES, INC.
 2100 N. PACIFIC HWY. WOODBURN, OREGON 97071 PHONE 503 / 981-9581

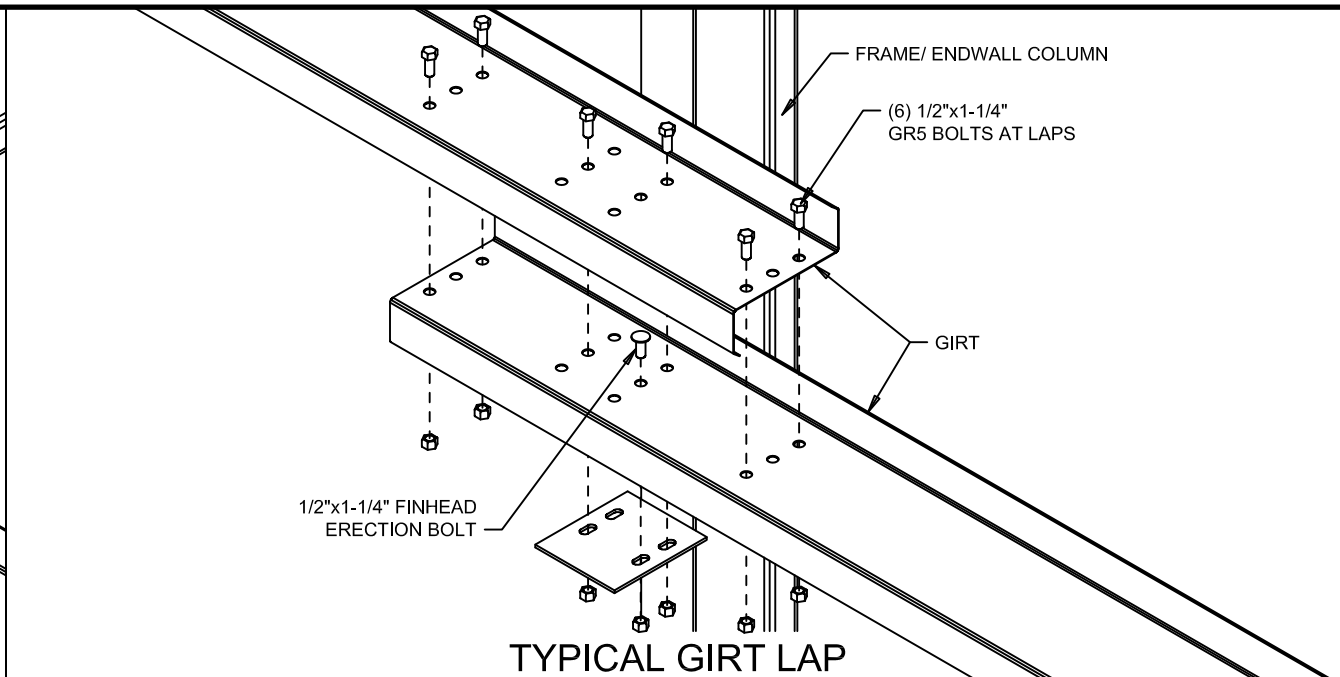
PROJ: Dumpster Cover
 Elk City, ID 83525
 TITLE: Portal Frame Elevation
 DEALER: Idaho County

THIS DRAWING INCLUDING DESIGN PRINCIPLES IS THE PROPERTY OF TRUSS-T STRUCTURES, INC. AND SHALL NOT BE REPRODUCED, COPIED OR LOANED IN PART OR IN WHOLE WITHOUT WRITTEN PERMISSION. IT IS NOT TO BE USED IN ANY MANNER THAT MAY CAUSE INJURY OR DETRIMENT DIRECTLY OR INDIRECTLY TO TRUSS-T STRUCTURES, INC.

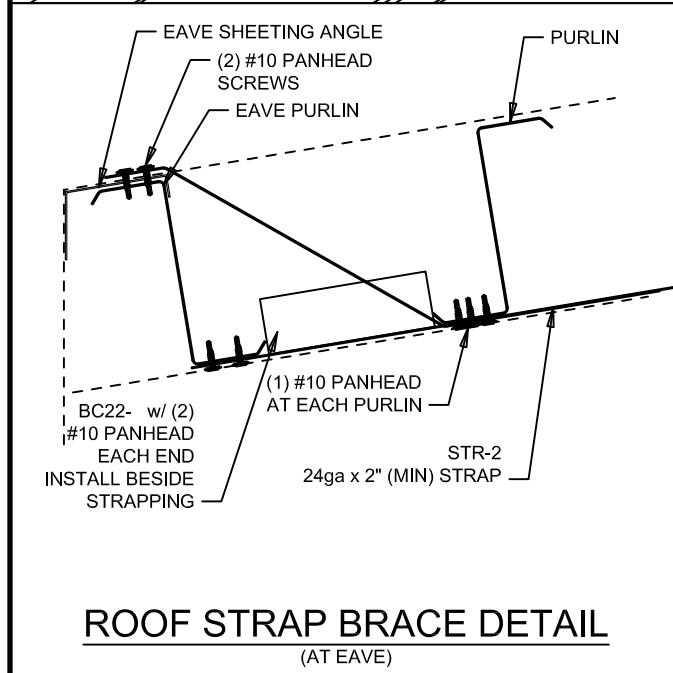
DATE: 3/07/24
 DWG BY: KLS
 CHECKED BY: JP
 PAGE: E9 OF E9
 JOB ID: 23-8981



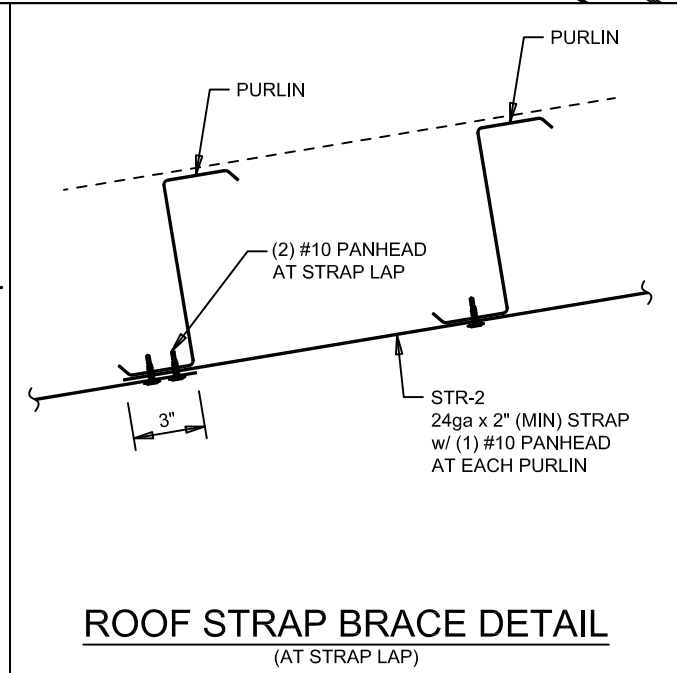
TYPICAL PURLIN LAP



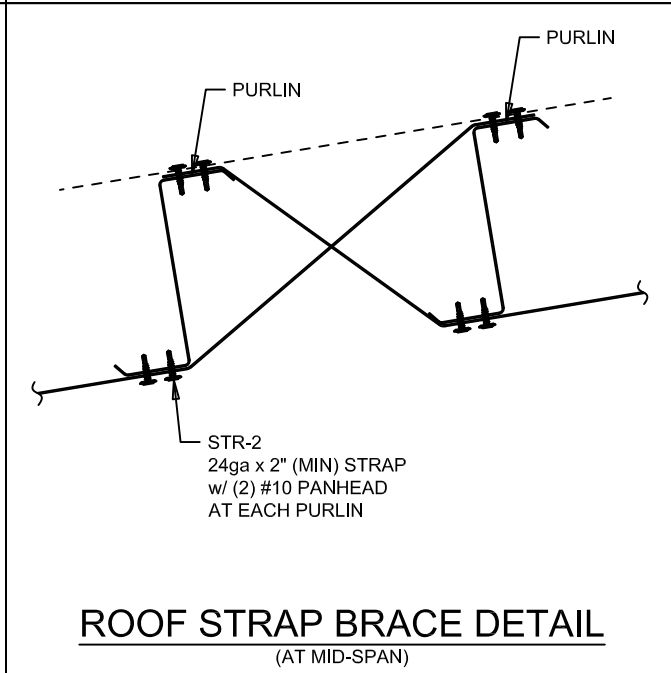
TYPICAL GIRT LAP



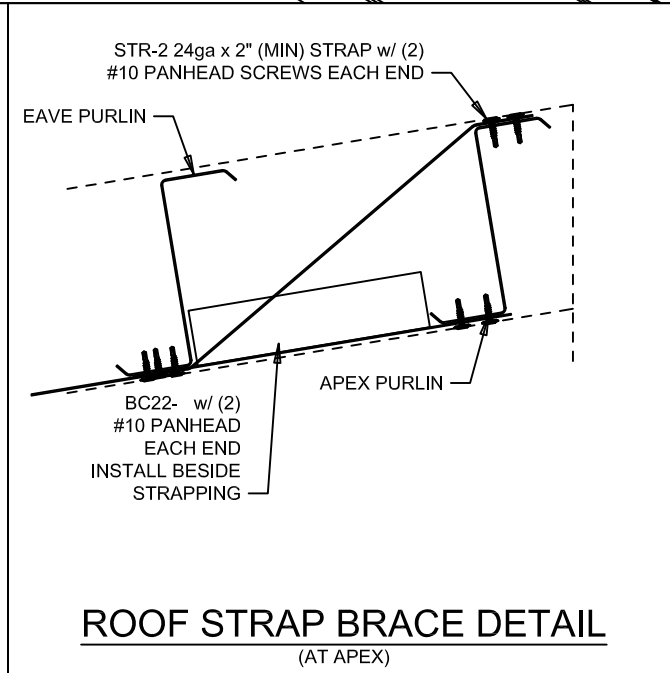
ROOF STRAP BRACE DETAIL
(AT EAVE)



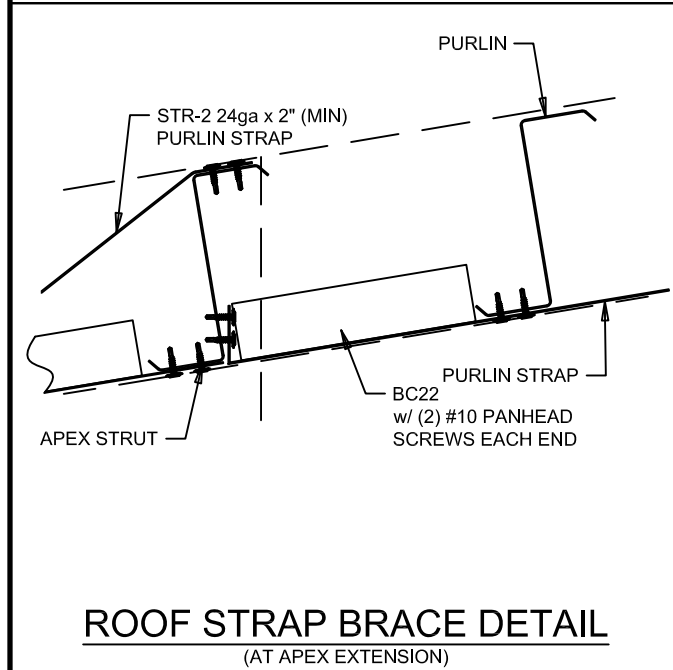
ROOF STRAP BRACE DETAIL
(AT STRAP LAP)



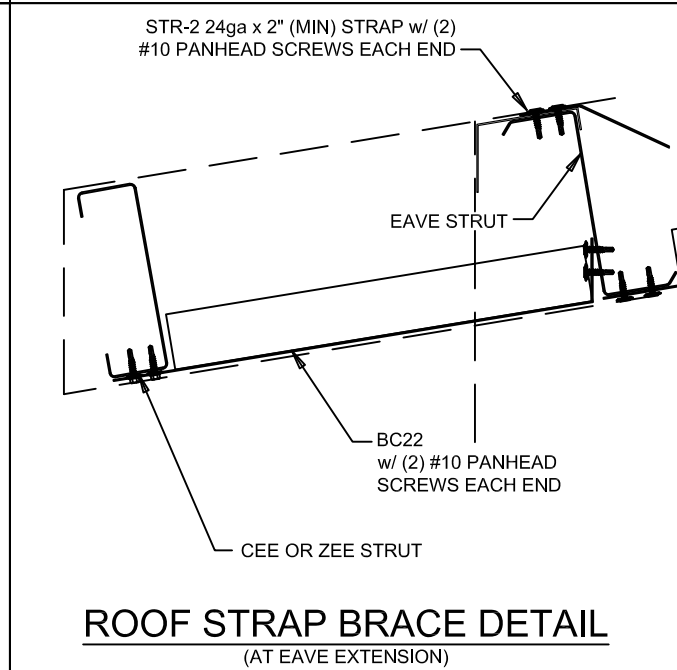
ROOF STRAP BRACE DETAIL
(AT MID-SPAN)



ROOF STRAP BRACE DETAIL
(AT APEX)



ROOF STRAP BRACE DETAIL
(AT APEX EXTENSION)



ROOF STRAP BRACE DETAIL
(AT EAVE EXTENSION)

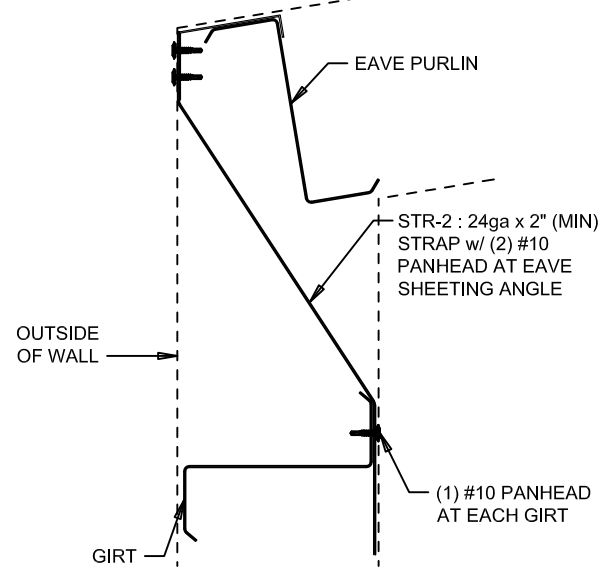
DATE	4/08/24
ISSUED FOR	Construction
REVISION	0
DESIGNER	GGD

TRUSS-T
PACIFIC BUILDING SYSTEMS
MANUFACTURED BY TRUSS-T STRUCTURES, INC.
2100 N. PACIFIC HWY. WOODBURN, OREGON 97071 PHONE 503 / 981-9581

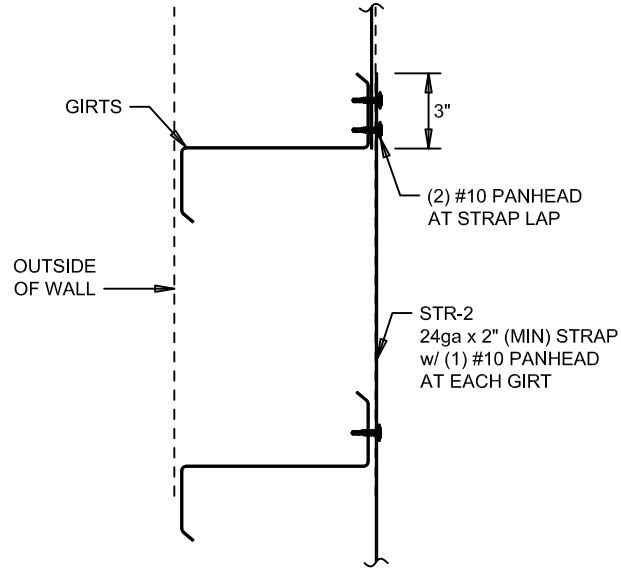
PROJ: Dumpster Cover
Elk City, ID 83525
TITLE: Detail Drawings
DEALER: Idaho County

THIS DRAWING INCLUDING DESIGN PRINCIPLES IS THE PROPERTY OF TRUSS-T STRUCTURES, INC. AND SHALL NOT BE REPRODUCED, COPIED OR LOANED IN PART OR IN WHOLE WITHOUT WRITTEN PERMISSION. IT IS NOT TO BE USED IN ANY MANNER THAT MAY CAUSE DAMAGE OR DETRIMENT DIRECTLY OR INDIRECTLY TO TRUSS-T STRUCTURES, INC.

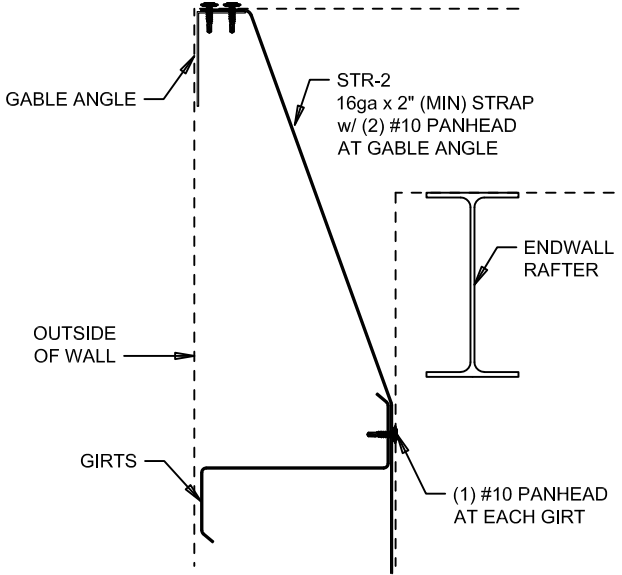
DATE: 3/07/24
DWG BY: KLS
CHECKED BY: JP
PAGE: D1 OF D5
JOB ID: 23-8981



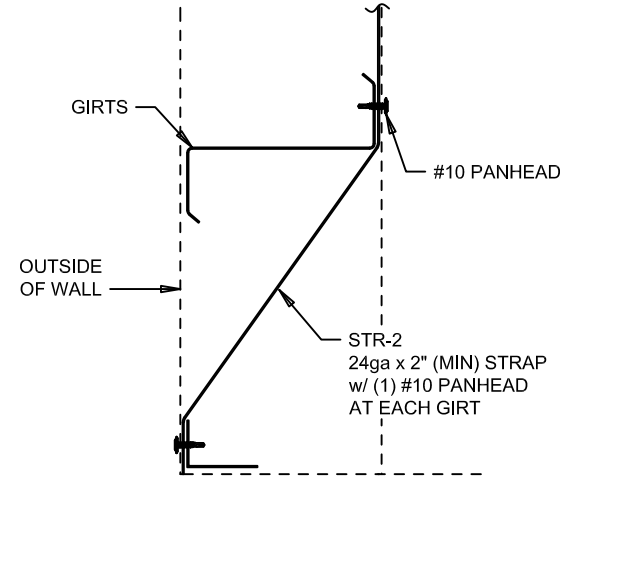
WALL STRAP DETAIL
(AT BUILDING EAVE)



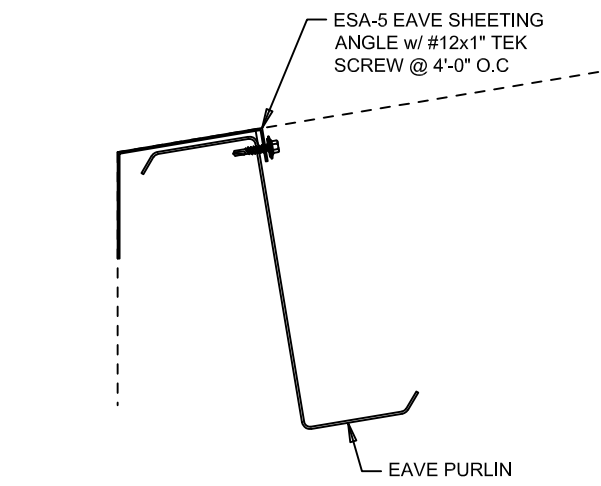
WALL STRAP DETAIL
(AT STRAP LAP)



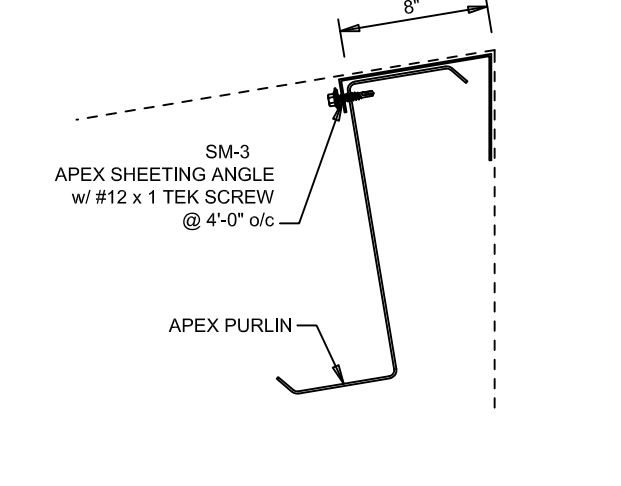
WALL STRAP DETAIL
(AT BY-PASS RAFTER)



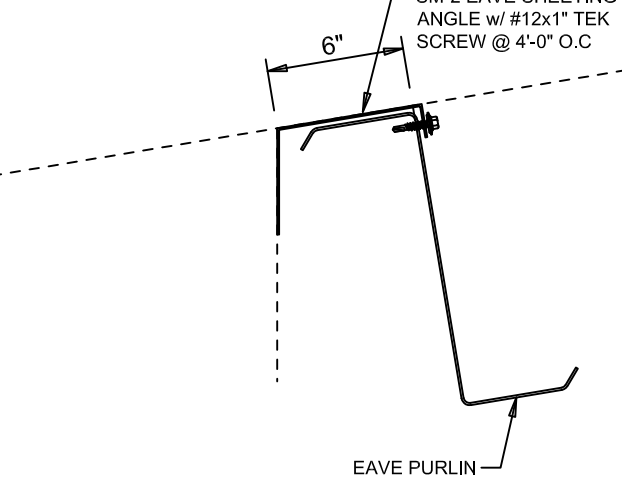
WALL STRAP DETAIL
(AT BASE ANGLE)



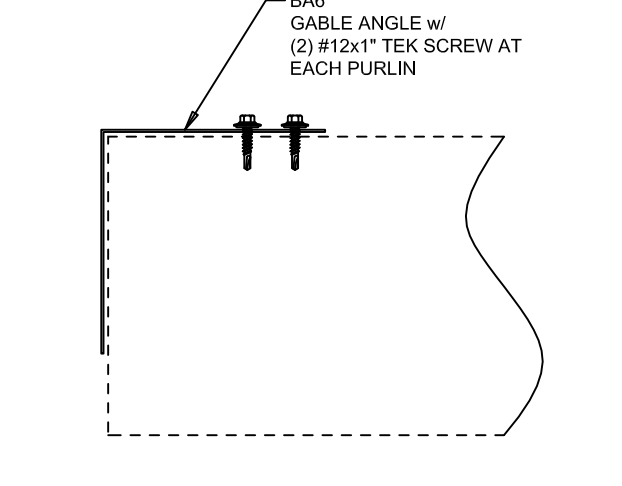
BUILDING EAVE AT EXTENSION



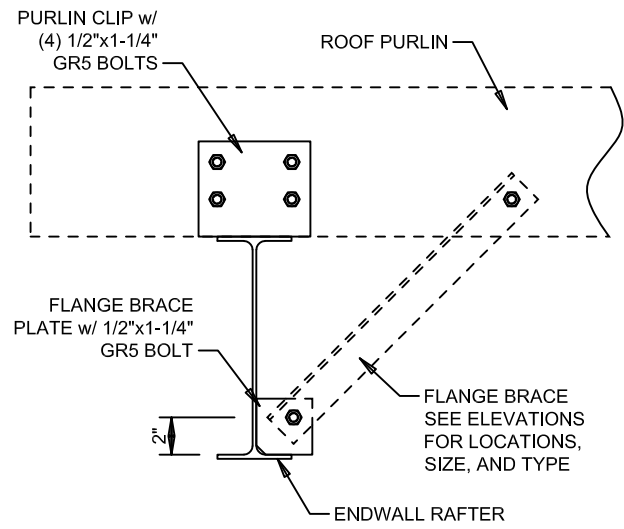
4 3/4:12 APEX SHEETING ANGLE



BUILDING EAVE



PBR GABLE ANGLE



PURLIN TO ENDWALL RAFTER

A10

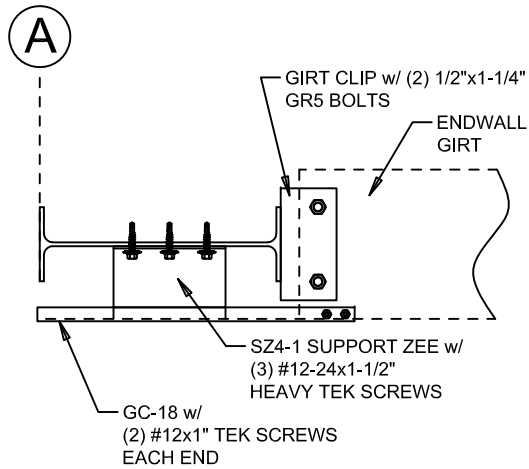
DATE	4/08/24
ISSUED FOR	Construction
REVISION	0
ISSUED FOR	Construction
DATE	4/08/24
ISSUED FOR	GGD

TruS-T
PACIFIC BUILDING SYSTEMS
MANUFACTURED BY TRUSS-T STRUCTURES, INC.
2100 N. PACIFIC HWY. WOODBURN, OREGON 97071 PHONE 503 / 981-9581

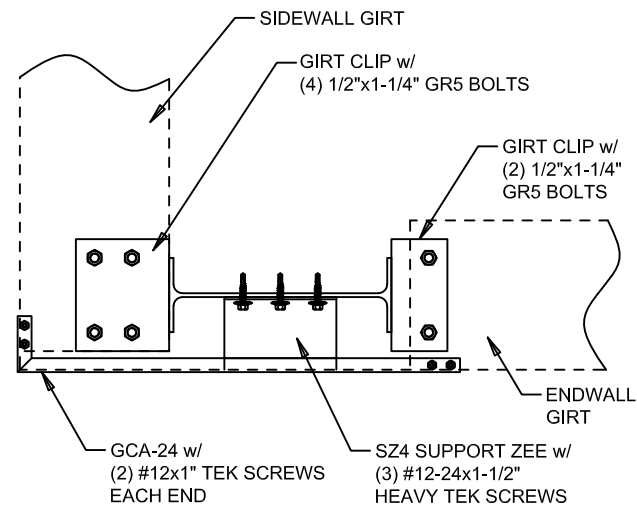
PROJ: Dumpster Cover
Elk City, ID 83525
TITLE: Detail Drawings
DEALER: Idaho County

THIS DRAWING INCLUDING DESIGN PRINCIPLES IS THE PROPERTY OF TRUSS-T STRUCTURES, INC. AND SHALL NOT BE REPRODUCED, COPIED OR LOANED IN PART OR IN WHOLE WITHOUT WRITTEN PERMISSION. IT IS NOT TO BE USED IN ANY MANNER THAT MAY CAUSE A DETRIMENT DIRECTLY OR INDIRECTLY TO TRUSS-T STRUCTURES, INC.

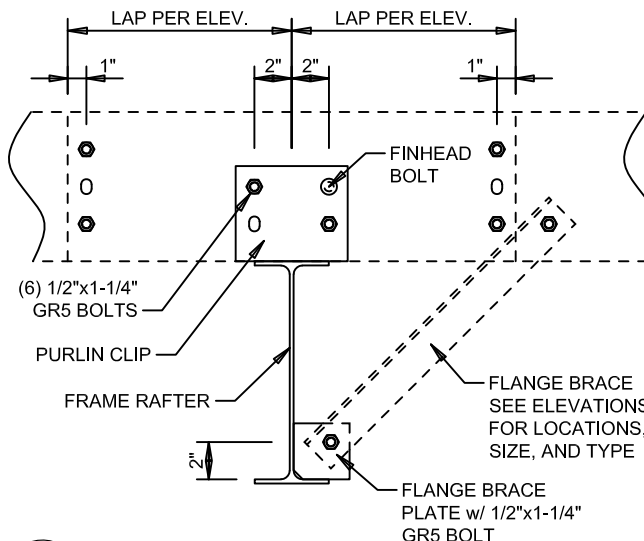
DATE: 3/07/24
DWG BY: KLS
CHECKED BY: JP
PAGE: D2 OF D5
JOB ID: 23-8981



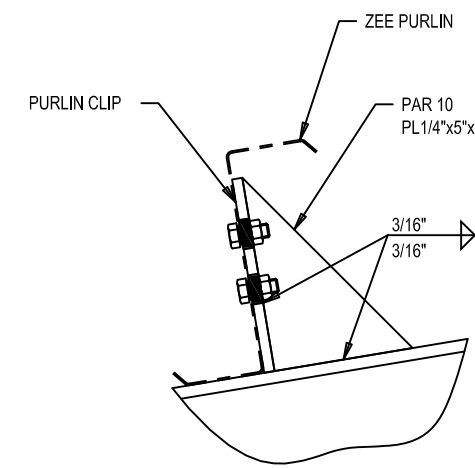
D13 CORNER AT FLUSH GIRTS



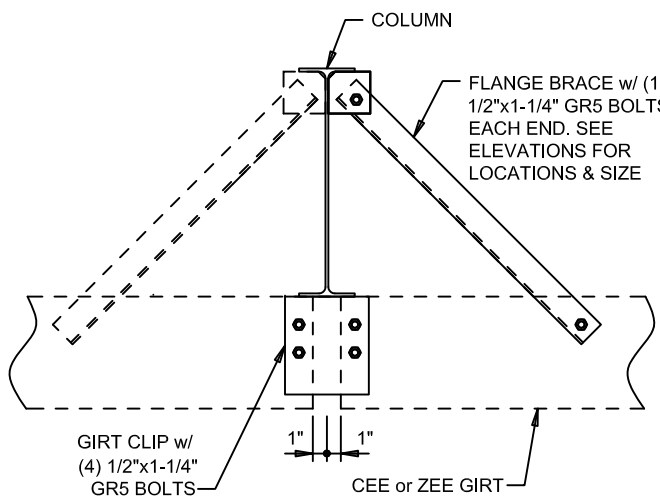
D15 CORNER AT FLUSH w/ BY-PASS GIRTS



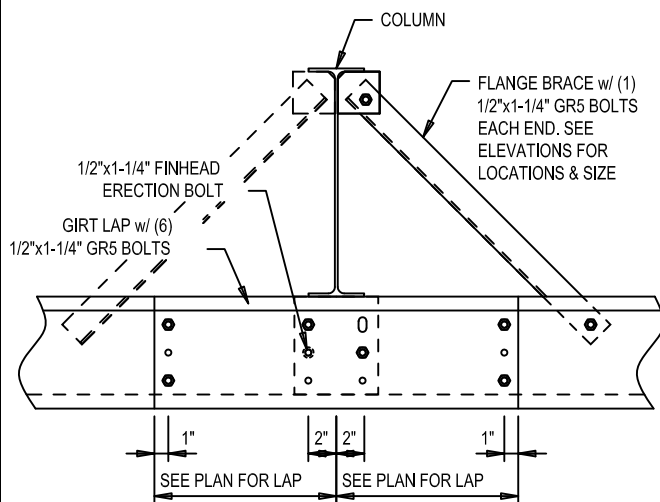
G2 LAPPED PURLIN TO RAFTER



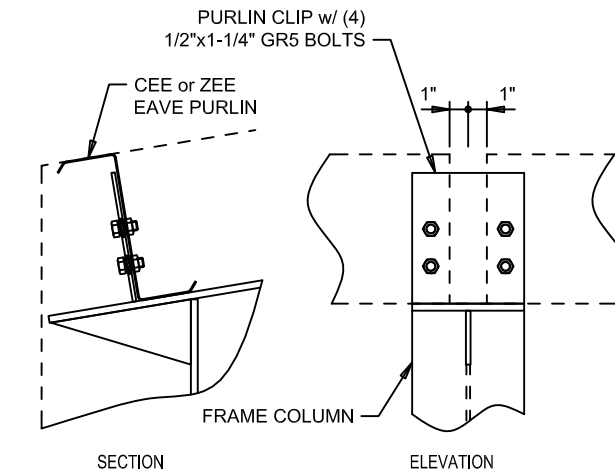
G11 PURLIN GUSSET PLATE



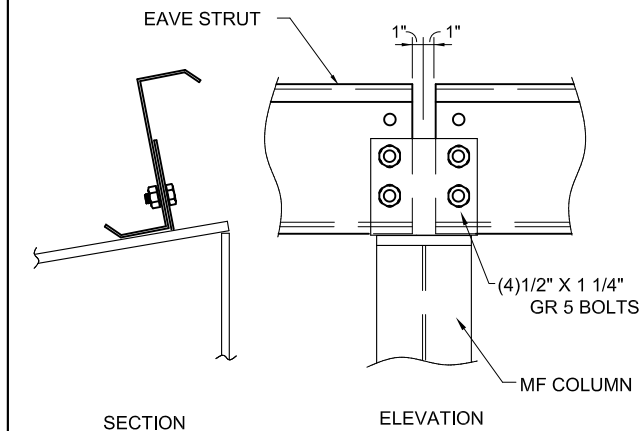
H4 GIRT TO COLUMN



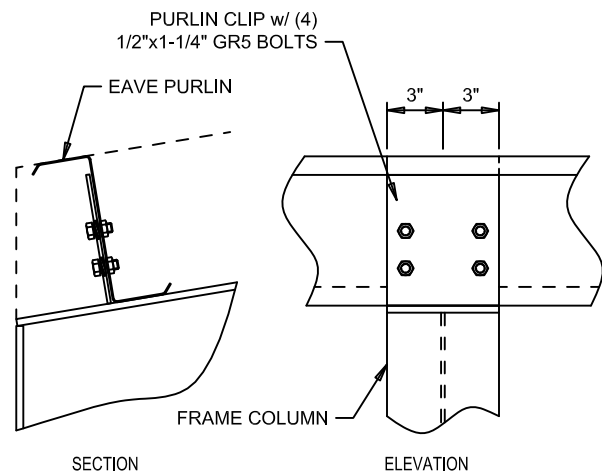
H2 LAP GIRT TO COLUMN



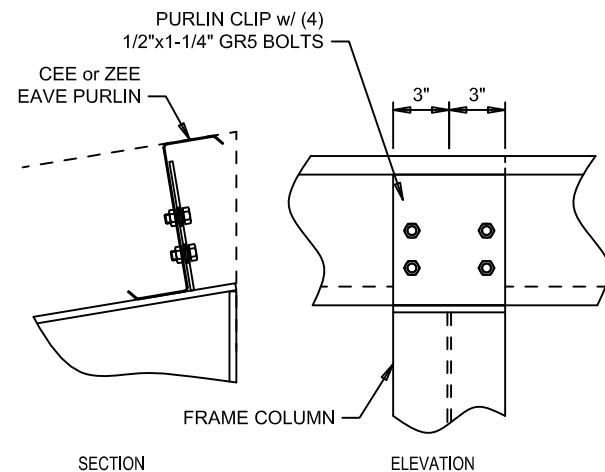
J16 EAVE STRUT TO FRAME



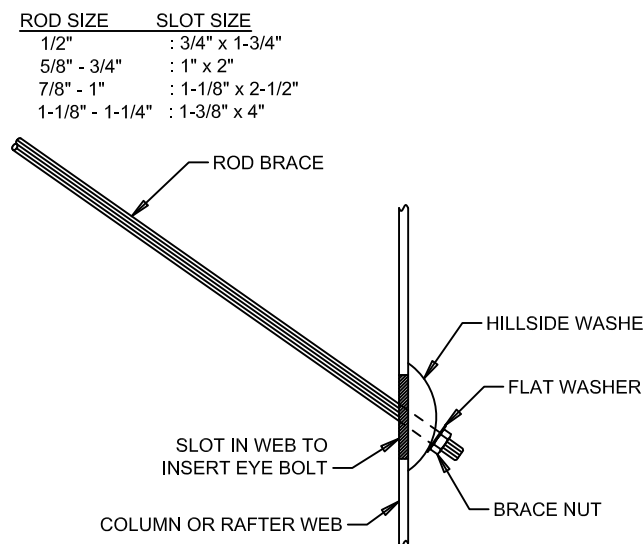
J17 EAVE STRUT TO RIGID FRAME



J61 EAVE STRUT TO FRAME



J67 EAVE STRUT TO FRAME



Q3 DIAGONAL ROD BRACE

ROD SIZE	SLOT SIZE
1/2"	: 3/4" x 1-3/4"
5/8" - 3/4"	: 1" x 2"
7/8" - 1"	: 1-1/8" x 2-1/2"
1-1/8" - 1-1/4"	: 1-3/8" x 4"

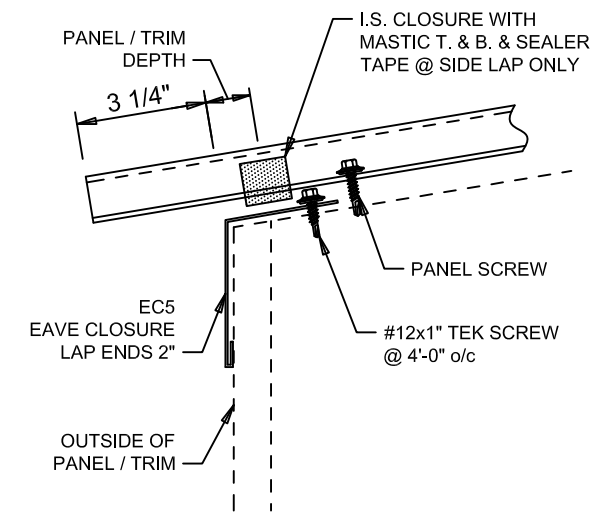
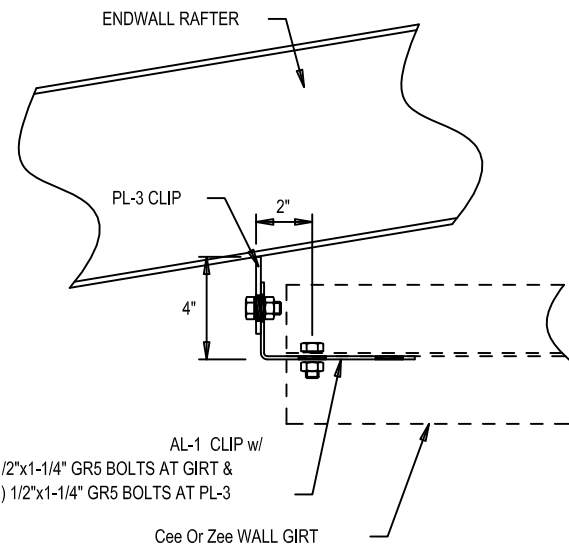
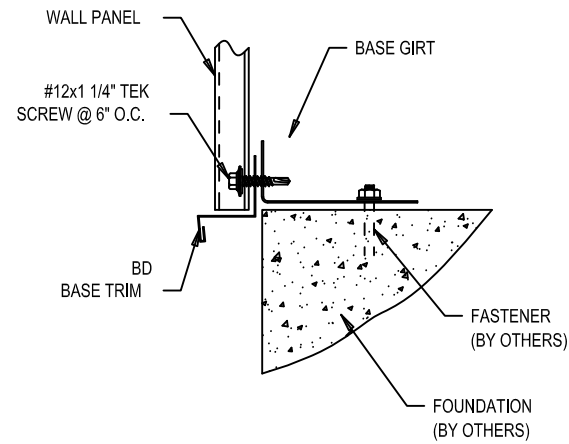
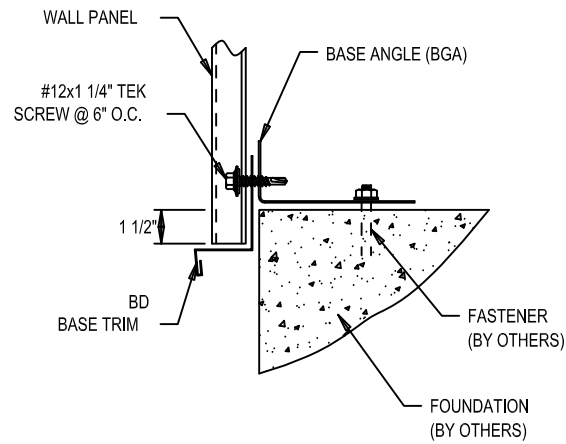
DATE	4/08/24
ISSUED FOR	Construction
REVISION	0
DESIGNER	GGD

Truss-T
 PACIFIC BUILDING SYSTEMS
 MANUFACTURED BY TRUSS-T STRUCTURES, INC.
 2100 N. PACIFIC HWY. WOODBURN, OREGON 97071 PHONE 503 / 981-9581

PROJ: Dumpster Cover
 Elk City, ID 83525
 TITLE: Detail Drawings
 DEALER: Idaho County

THIS DRAWING INCLUDING DESIGN PRINCIPLES IS THE PROPERTY OF TRUSS-T STRUCTURES, INC. AND SHALL NOT BE REPRODUCED, COPIED OR LOANED IN PART OR IN WHOLE WITHOUT WRITTEN PERMISSION. IT IS NOT TO BE USED IN ANY MANNER THAT MAY CAUSE TRUSS-T AND ITS AFFILIATES TO BE HELD LIABLE IN ANY MANNER.

DATE: 3/07/24
 DWG BY: KLS
 CHECKED BY: JP
 PAGE: D3 OF D5
 JOB ID: 23-8981

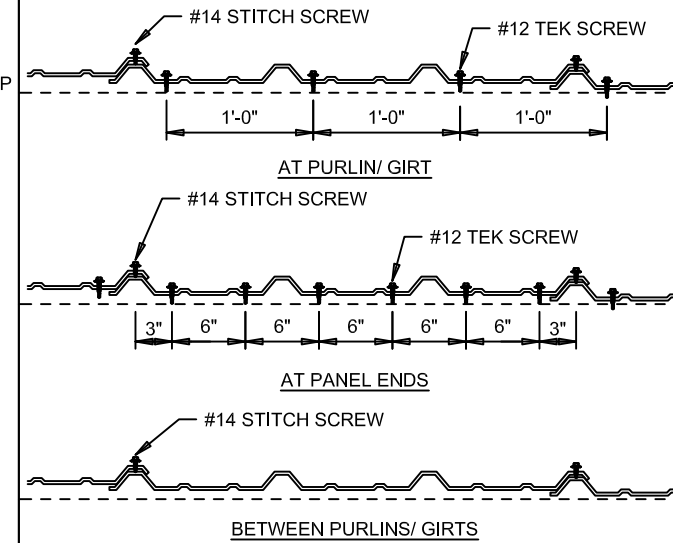
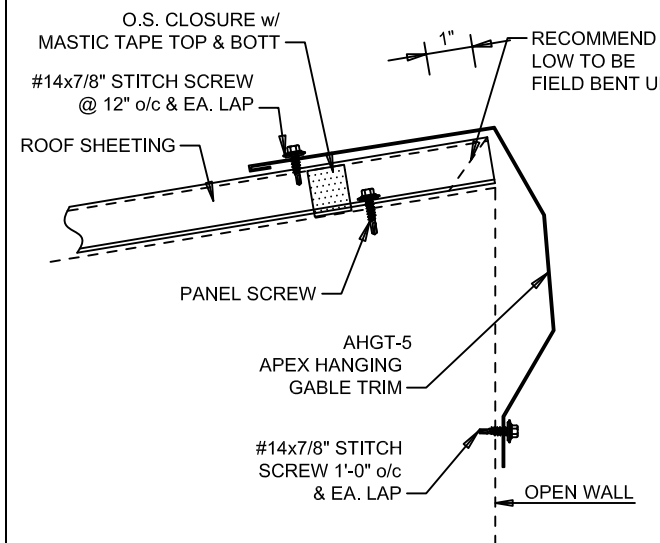
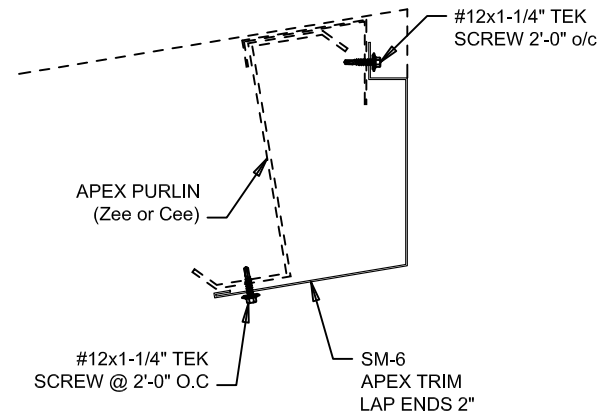
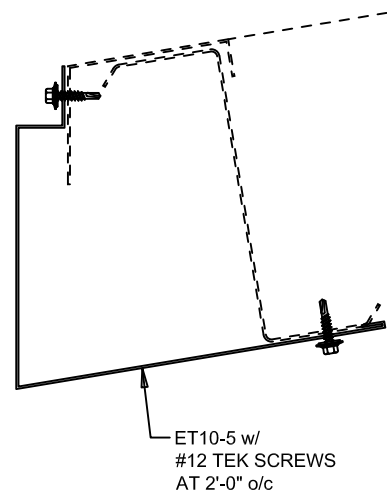


T3 BASE TRIM DETAIL

T4 BASE TRIM DETAIL

W4 ENDWALL GIRT TO RAFTER

PBR NO GUTTER

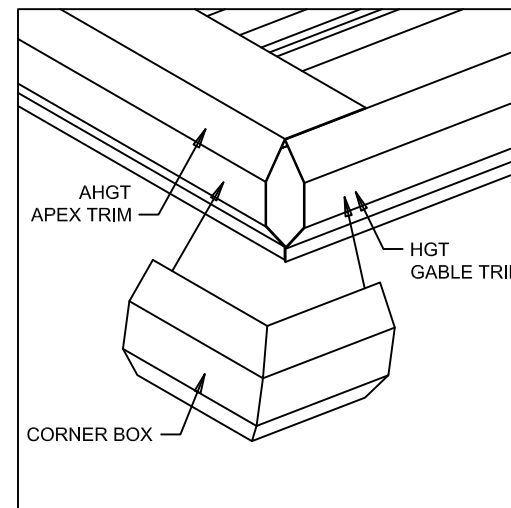
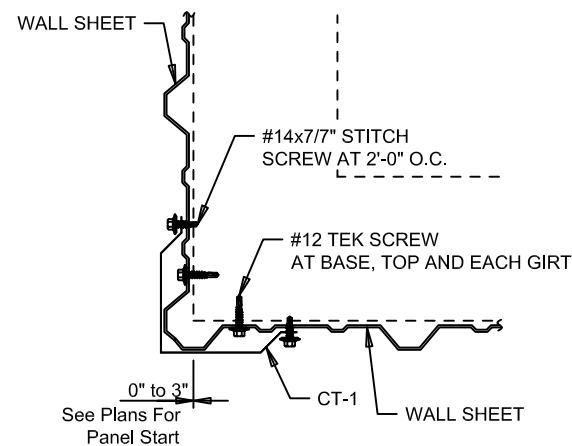
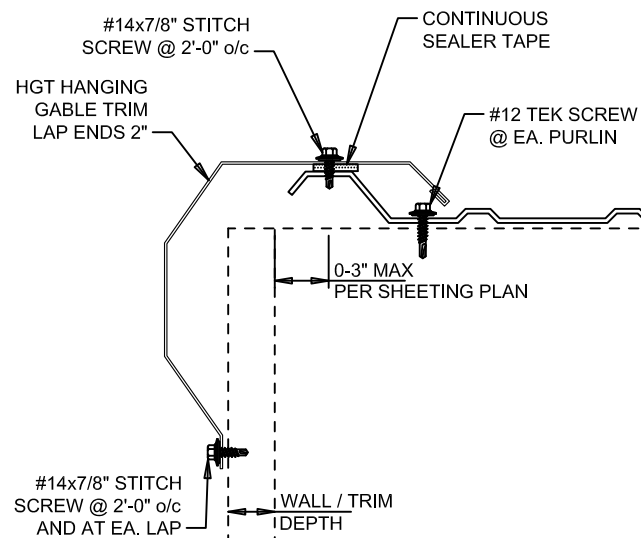


EAVE DETAIL w/o TRIM

APEX DETAIL w/o SOFFIT

ROOF PANEL AT APEX

PBR PANEL SCREWS

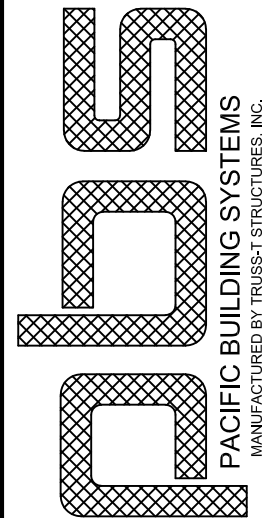


BUILDING GABLE

CORNER TRIM DETAIL

CORNER BOX AT APEX

DATE	4/08/24
ISSUED FOR	Construction
REVISION	0



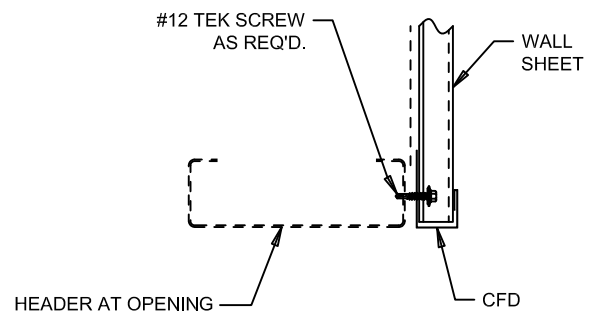
PACIFIC BUILDING SYSTEMS
MANUFACTURED BY TRUSS-T STRUCTURES, INC.

2100 N. PACIFIC HWY. WOODBURN, OREGON 97071 PHONE 503 / 981-9581

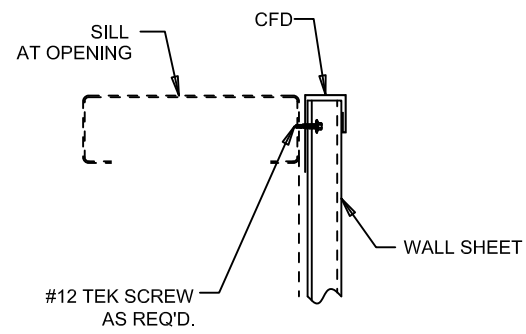
PROJ: Dumpster Cover
Elk City, ID 83525
TITLE: Detail Drawings
DEALER: Idaho County

THIS DRAWING INCLUDING DESIGN PRINCIPLES IS THE PROPERTY OF TRUSS-T STRUCTURES, INC. AND SHALL NOT BE REPRODUCED, COPIED OR LOANED IN PART OR IN WHOLE WITHOUT WRITTEN PERMISSION. IT IS NOT TO BE USED IN ANY MANNER THAT MAY CAUSE A DETRIMENT DIRECTLY OR INDIRECTLY TO TRUSS-T STRUCTURES, INC.

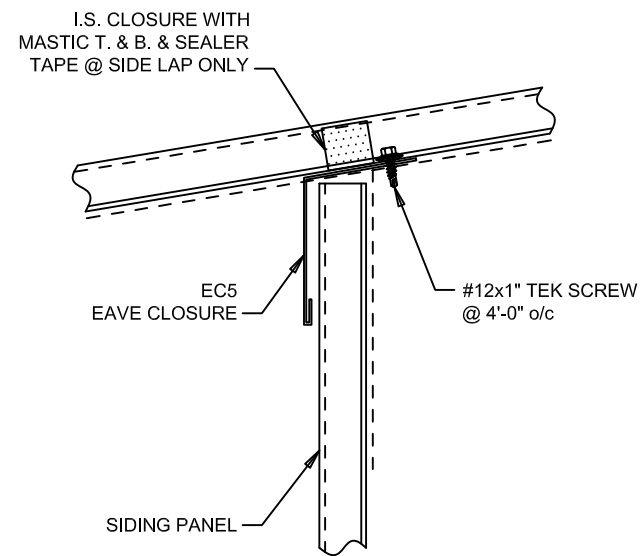
DATE: 3/07/24
DWG BY: KLS
CHECKED BY: JP
PAGE: D4 OF D5
JOB ID: 23-8981



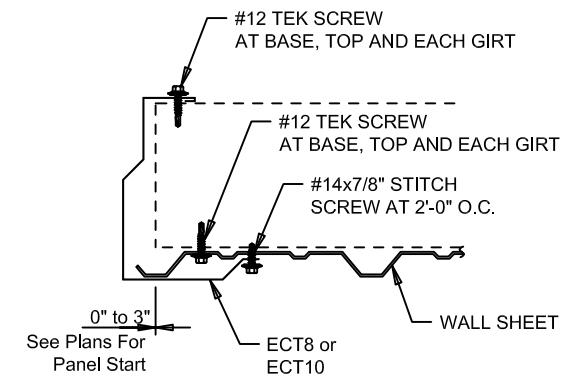
HEADER TRIM DETAIL
(WITH HEADER WRAPS)



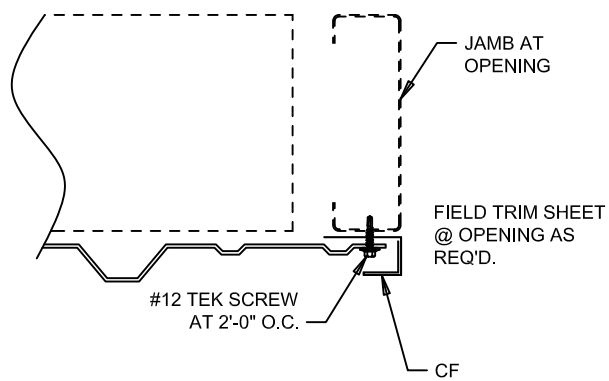
SILL TRIM DETAIL



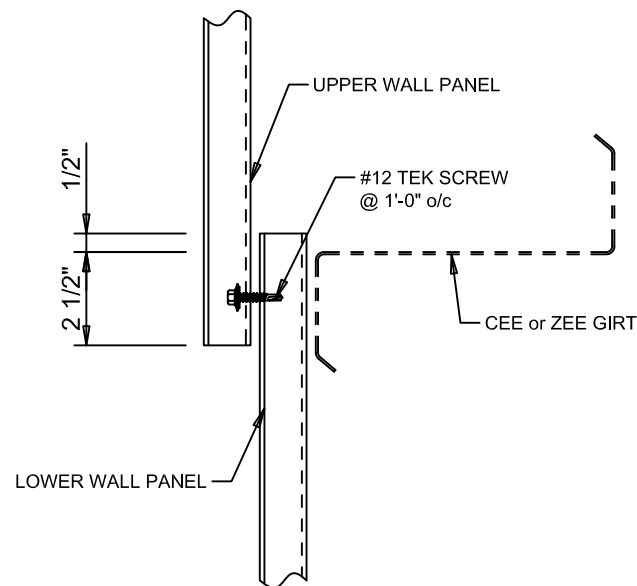
BUILDING EAVE AT EXTENSION
(WITHOUT SOFFIT)



CORNER TRIM DETAIL
(AT OPEN WALL)

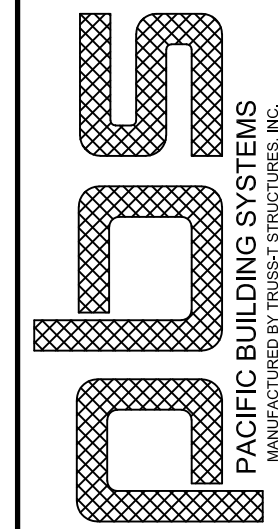


JAMB TRIM DETAIL



WALL PANEL LAP DETAIL

DATE	4/08/24
ISSUED FOR	GGD
CONSTRUCTION	
REVISION	0



PACIFIC BUILDING SYSTEMS
MANUFACTURED BY TRUSS-T STRUCTURES, INC.

2100 N. PACIFIC HWY. WOODBURN, OREGON 97071 PHONE 503 / 981-9581

PROJ: Dumpster Cover
Elk City, ID 83525
TITLE: Detail Drawings
DEALER: Idaho County

THIS DRAWING INCLUDING DESIGN PRINCIPLES IS THE PROPERTY OF TRUSS-T STRUCTURES, INC. AND SHALL NOT BE REPRODUCED, COPIED OR LOANED IN PART OR IN WHOLE WITHOUT WRITTEN PERMISSION. IT IS NOT TO BE USED IN ANY MANNER THAT MAY CAUSE DETRIMENT DIRECTLY OR INDIRECTLY TO TRUSS-T STRUCTURES, INC.

DATE: 3/07/24
DWG BY: KLS
CHECKED BY: JP
PAGE: D5 OF D5
JOB ID: 23-8981